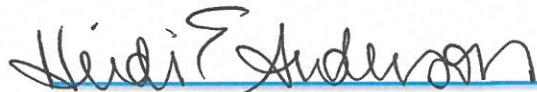




Minnesota Charter School District # 4111



School Board Chair,
Louis Smith



Interim Executive Director,
Heidi E. Anderson

2504 Columbus Ave.
Minneapolis, MN 55404
Phone: 612-333-1614
Fax: 612-339-2229
Email: heidi.anderson@afa.tc

Per Minnesota Statute 124E.16 Subd. 2

October 1, 2015

Table of Contents

BACKGROUND	4
HISTORY	4
MISSION	4
VISION	5
SCHOOL GOVERNANCE	6
SCHOOL BOARD TRAININGS	6
SCHOOL MANAGEMENT	7
FACULTY & STAFF.....	8
STUDENTS.....	9
ENROLLMENT AND ATTRITION.....	9
DEMOGRAPHICS	9
ACADEMIC PROGRAMS.....	10
COLLEGE FAST-TRACK PROGRAM	10
SELF-DIRECTED LEARNING PROGRAM	10
INNOVATIVE PRACTICES & IMPLEMENTATION.....	10
School-Wide GOALS FROM 2014-2015.....	12
<i>Goals Achieved</i>	<i>12</i>
<i>Goals Partially or Not Achieved</i>	<i>13</i>
CHALLENGES AND RESPONSES	14
<i>Truancy.....</i>	<i>14</i>
<i>Low Literacy and Numeracy</i>	<i>14</i>
<i>Credit Deficiency</i>	<i>15</i>
<i>Underdeveloped Social Skills</i>	<i>15</i>
OVERALL RESULTS.....	15
Future Plan	16
CHARTER CONTRACT GOALS & UPDATE.....	17
ACADEMIC GOALS.....	17
<i>Goals Achieved</i>	<i>17</i>
<i>Goals Partially or Not Achieved</i>	<i>18</i>
NON-ACADEMIC GOALS	20
<i>Goals Achieved</i>	<i>20</i>
FINANCES.....	22
AUTHORIZER.....	22
NON-PROFIT STATUS.....	23
APPENDIX A: CURRICULUM VITAE OF THE INTERIM EXECUTIVE DIRECTOR	24
APPENDIX B: CURRICULUM VITAE OF THE INTERIM LEAD TEACHER	27
APPENDIX C: ORGANIZATIONAL CHART FOR MANAGEMENT AND GOVERNANCE.....	31
APPENDIX D: ADMINISTRATIVE PROFESSIONAL DEVELOPMENT PLANS.....	32
APPENDIX E: ATTENDANCE DATA FOUR YEAR COMPARISON	33

APPENDIX F: 2014-2015 ENDING FINANCIAL STATEMENT, JUNE 30, 2015	34
APPENDIX G: 2015-2016 PROJECTED BUDGET	38

Background

Augsburg Fairview Academy (AFA) completed its tenth full year of school in June of 2015. In 2004, the founders envisioned a school in which high school students would engage in challenging courses and eventually graduate with one or more health care certifications earned in the process. While exposing students to opportunities in the health care field is still a large part of the programming at Augsburg Fairview Academy, our school has changed in subtle ways due to the needs of our students and the talents of our fine staff.

We now describe ourselves as a health careers and helping careers school. Our focus has moved more toward preparing students for college. This is something we do quite well, especially considering the high numbers of students at AFA who have significant developmental risk factors.

We are able to help students make great strides toward college because of the culture we have developed as a school. The stability of our staff provides for a continuity of professional philosophies for working with young adults from year to year. The primary philosophies we use are the Circle of Courage™, Authoritative Instruction, Non-coercive Instruction, and Circle Processes.

History

The Academy began eleven years ago as Augsburg Fairview Academy for Health Careers. The school received its charter in 2004 with backing from the Bill and Melinda Gates Foundation and the Center for School Change. The first students enrolled in the 2005-2006 school year at the Energy Park Drive location in St. Paul. Since its opening, AFA has changed locations twice: first to 8th St. and Hennepin Ave. in downtown Minneapolis and finally to our current location at 2504 Columbus Ave. in the Phillips Neighborhood of Minneapolis.

We entered into a partnership with Messiah Lutheran Church in 2009 to renovate their former Community and Parish Center. The long-term lease and our common vision for the neighborhood both ensure a stable and lasting home for the school. We believe that this location will be our home for many years to come.

Mission

Augsburg Fairview Academy invites young adults from diverse communities to prepare for college, career, and life. We support students facing educational barriers to achieve these through an intense program of rigorous study and real- world connections to health care, education and other human services.

The mission highlights our commitment to preparing students for college, and specifically focuses on students from diverse backgrounds. In 2013, the mission was updated to address the growing need of students facing educational barriers. Services toward helping eliminate educational barriers and empower students to find solutions to causes is an essential need for student academic and personal success.

During the 2014-2015 school year the demographic breakdown of our students was as follows:

78% Black, not Hispanic, 19% American Indian, 3% White, not Hispanic, 8% Hispanic, and 1% Asian or Pacific Islander. The students who graduate and eventually go to college are students that, traditionally, have either dropped out of high school and/or face extraordinary barriers to their education. The ultimate impact on these students, their families, and communities will be felt after they receive their college degrees or certifications and begin to contribute socially and economically to society.

Vision

Augsburg Fairview Academy supports, motivates and challenges high school students to achieve not only academic success but the habits of mind and body that will give them happiness, satisfaction, and wellness for the rest of their lives.

Augsburg Fairview Academy sees its role in students' lives as much more than academic. We must provide a supportive and therapeutic environment for students who have many struggles and barriers in their lives. The vast majority of students at AFA, at least 93% in 2014-2015, were identified as living in poverty. Most students at AFA have several developmental risk factors as described by Michael Shader's report for the U.S. Department of Justice (2001), "Risk Factors for Delinquency: An Overview." A risk factor is any factor that can cause harm or lead to the development of a disorder. The following are some of the most common risk factors: general criminal offenses, exposure to violence, substance use, poor parent-child relationships, poor parental monitoring/supervision, broken homes, abuse/neglect, and neighborhood crime. These risk factors have an extremely negative impact on academic outcomes.

Shader (2001) identifies 28 developmental risk factors for youth. The presence of six or more makes it ten times more likely that a young person will commit a violent act before the age of eighteen than a teen with only one developmental risk factor. This is an indication of how developmental risk factors can directly or indirectly affect academic outcomes in a negative manner. Students at AFA, on average, have more than eight developmental risk factors (Shader, 2001). In a random sampling of ten students, the mean number of developmental risk factors was 9.2.

The teachers at AFA focus on the affective qualities of their students; this guides the educational approaches they employ. The programs and initiatives we have introduced at Augsburg Fairview Academy have improved our ability to reduce the negative impact of the developmental risk factors in students' lives and to bolster the resiliency and ability of students to achieve academically. We have also seen growth in the students' generosity through numerous service learning projects. This continues to be an important area of growth for our school.

School Governance

2014-2015 School-Year Charter Public School Board

2013-2014 Election Date: March 7th, 2014

2014-2015 Election Date: December 19th, 2014

Name	Position	Group	Date Seated	Phone	Email	Attendance	Training
Louis Smith	President	Community Member	1/1/2014	612-344-1400	smith@smithpartners.com	Missed 3 meetings	Original: 4/21/2012 Annual: 6/26/15
Vasileios Serefeas	Secretary	AFA Teacher	12/19/2014	612-333-1614	vasileios.serefeas@afa.tc	Missed 0 meetings	Original: In Process Annual: 6/26/15
Max Clark-Vail	Treasurer	AFA Teacher	12/19/2014	612-333-1614	max.clark-vail@afa.tc	Missed 0 meetings	Original: In Process Annual: 6/26/15
Regina Pekarek	Member	Community Member	12/19/2014	612-672-7403	rpekare1@fairview.org	Missed 0 meetings	Original: 2/5/2015 Annual: 6/26/15
Virginia McCarthy	Member	Community Member	7/1/2014	952-412-3933	mccarthy@augsborg.edu	Missed 1 meeting	Original: 9/1/2014 Annual: 6/26/15
Sue Hageness	Member	Community Member	12/19/2014	651-690-8893	smhageness@stkate.edu	Missed 6 meeting	Original: 8/19/2010 Annual: 6/26/15
Joan Curtis	Member	Parent Member	3/7/2014	763-543-8195	msjoancurtis@comcast.net	Missed 2 meetings	Original: 4/21/2012 Annual: 6/26/15
Thomas Matuseski	Member	AFA Teacher	3/7/2014	612-333-1614	tom.matuseski@afa.tc	Missed 1 meeting	Original: 5/20/2010 Annual: 6/26/15
Tara Howard	Member	AFA Teacher	12/19/2014	612-333-1614	tara.howard@afa.tc	Missed 3 meetings	Original: In Process Annual: 6/26/15
Dusty Lee	Member	AFA Teacher	3/7/2014	612-333-1614	dusty.lee@afa.tc	Missed 1 meeting	Original: In Process Annual: 6/26/15
Ricky White	Member	Ex Officio	7/1/2013	612-810-0299	ricky.white@afa.tc	Missed 3 meetings	Original: Annual:
Heidi E. Anderson	Member	Ex Officio	7/1/2012	612-245-1844	heidi.anderson@afa.tc	Missed 2 meetings	Original: 5/20/2010 Annual: 6/26/15
Kelsey Nelson	Member	Ex Officio	7/1/2012	612-333-1614	kelsey.nelson@afa.tc	Missed 2 meetings	Original: 10/6/2012 Annual: 6/26/15
Dawn Jenkins	Member	Ex Officio	10/1/2014	651-274-5149	dawn_jenkins@comcast.net	Missed 0 meetings	Original: Annual:

School Board Trainings

During the 2014-2015 school year, the following members received initial board training: Regina Pekarek, and Virginia McCarthy. All other members either completed the original board training on governance, finance and academics, or are new to the board and are currently in process of receiving training beginning in September of 2015.

Annual training on finance took place at the June 26, 2015 board meeting. Dawn Jenkins, the Augsburg Fairview Academy accountant, led training on the difference between Title 1, Title 2, General Education and Special Education funding.

School Management

2014-2015 School Management Information

Name	File Folder #	Assignment	Years Employed at AFA	Left During 2014-2015	Not Returning in 2015-2016
Ricky White	370222	Executive Director	1.75	X	
Heidi E. Anderson	438828	Lead Teacher	8		
Kelsey Nelson	452180	Operations Manager	4		
Elizabeth Saunby		Records Specialist	3		
Sarah Jergenson		Administrative Assistant	3		
Steve Neumann		Custodial Services	4		

The Academy's Executive Director, Mr. Ricky White, resigned as of April 17th, 2015. His tenure as director lasted 21.5 months – from the 2013-2014 school year until his resignation date during the 2014-2015 school year. His professional background is documented in his curriculum vitae in Appendix A. Ms. Heidi E. Anderson, served as the Lead Teacher for the 2014-2015 school year, and held this position since the 2012-2013 school year. Beginning April 17th, 2015, Ms. Anderson also assumed the duties of Executive Director along with her Lead Teacher duties. Her professional background is documented in her curriculum vitae in Appendix B.

The separation of management authorities is shown in the organization chart in Appendix C. Due to the resignation of Mr. Ricky White during the 2014-2015 school year, the Board did not establish a professional development plan for him. Because Ms. Heidi E. Anderson was not hired full time as Interim Executive Director until July 1, 2015, her professional development plan was adopted at the school board meeting on September 25, 2015 for the 2015-2016 school year. This is documented in Appendix D.

Teaching Faculty and Staff

2014-2105 Teaching Faculty and Staff

Name	File Folder #	Assignment	Start Date	Left During 2014-2015	Not Returning in 2015-2016
Gatha Tara Howard	450083	English	03/2011		
Robyn Pal-Freeman	461316	English	08/2014		
Vasileios Serefeas	466660	Science	08/2013		
Kelsey Nelson	452180	Science	08/2014		
Tom Matuseski	325479	Math	08/2007		
Brittany Hacker	458676	Math	08/2010	X	
Dusty Lee	467797	Social Studies	08/2012		
Luke Sargent	434132	Social Studies	08/2014		
Max Clark-Vail	469222	Visual Arts	08/2013		
Ken Jugasek	304947	Health and Wellness	01/2014		
Michael Pepin	449685	Phy Ed & Attendance	08/2011		
Jessica Niemand	427306	Special Education	08/2006		
Sam Axner-Engel	395072	Special Education	08/2011		
Jenn Nelsen	369037	Special Education	09/2013	X	
Sean Clark	335650	Special Education	01/2015		
Anita Gates	482840	Dakota Studies	08/2013		
Russ Wilkie	386822	Ojibwe Studies	08/2013	X	
Elizabeth Saunby		Records Specialist	08/2012		
Sarah Jergenson		Education Coordinator	08/2012		
Mohamed Ahmed		Nutrition Services	08/2011		
Alexandra Moen	473649	Work Coordinator	08/2014		
Jennifer Andersen	467330	School Social Worker	09/2012	X	
Michelle Fournier	481237	School Social Worker	04/2013		
Brandon Baity	485636	School Social Worker	01/2015		
Nikia Hensel		Paraprofessional	10/2013		
Rebekah Keller		Paraprofessional	09/2013		
Eli Balbach		Paraprofessional	09/2013		
Cedric Riley		Paraprofessional	11/2014		
Dawn Shannon	402522	Paraprofessional	08/2014	X	
Mikayla Schaaf		Paraprofessional	08/2014	X	
Sandra Smith		Paraprofessional	08/2014		
Richard Hawj		Admissions Coordinator	08/2014	X	
Kathryn Smith		Title 1 Paraprofessional	08/2013		
Melissa Henry		Title 1 Paraprofessional	08/2013		X

Students

Enrollment and Attrition

Student Enrollment and Attrition Rates

School Year	October 1 Child Count	End of the Year Count	Attrition	Percentage
2012-13	129	153	+24	+18.6%
2013-14	164	128	-36	-21.9%
2014-15	145	124	-21	-14.4%

The enrollment goal for the 2014-2015 school year was an end of year ADM of 140. The final ADM totaled 129.29. Three quarters of the year, AFA was on track to meet the goal of 140ADM. However, a significant event in the community impacted Quarter 4 attrition. For more information, please contact the Interim Executive Director.

Demographics

The following demographic data were extracted from the October 1, 2014 child count and end of the year count:

Student Demographic Data

Category	October 1 Child Count	Percentage	End of the Year Count	Percentage
Total number of students enrolled	145	100%	124	100%
Race: American Indian	18	12.6%	17	13.7%
Race: Asian/Pacific Islander	3	2%	3	2.4%
Race: Hispanic	11	7.5%	9	7.2%
Race: African American	108	74.5%	93	75%
Race: White	5	3.4%	2	1.6%
Gender: Female	80	55.1%	61	50%
Gender: Male	65	44.9%	61	50%
Limited English Proficiency	0	0%	0	0%
Special Education	45	31%	30	24.1%
Free and Reduced Meals*	145	100%	124	100%
Homeless/Marginally Housed	87	60%	56	45.1%

*AFA qualifies for the Community Eligibility Provision, so 100% of students receive free breakfast and lunch daily.

Academic Programs

Augsburg Fairview Academy had two programs of study, the College Fast-Track program and the Self-Directed Learning program during the 2014-2015 school year.

College Fast-Track Program

The College Fast-Track (CFT) program aims to prepare students for college at an accelerated pace. Students who enter the program in ninth grade and maintain good academic standing are able to complete most of their required high school coursework by the end of their 11th grade year. In their 12th grade year, students take college courses at Minneapolis Community and Technical College (MCTC). These courses count toward their college credits and also count for high school credits. Students who have participated in this program successfully completed courses and made very smooth transitions to college.

Last year, three students took courses at MCTC. They took courses in Nursing Assistant Certification (CNA), Biology, Arabic, English. These three students have all matriculated one of the following schools: MCTC, St. Catherine's University and Augsburg College.

Two college- level courses were added to the course offerings during the 2014-2015 school year. Students meeting the prerequisite had the opportunity to take AP Biology and Honors English. This is the first time AP and Honors courses were offered at the Academy and will continue in the new school year as there is student need. As evidenced by the data, the majority of students at the Academy are significantly behind grade level in literacy and numeracy skills. However, the percentage that are at grade level or beyond require advanced course offerings, which need to be added annually. Remedial courses will continue to be offered in tandem with grade level content for learners behind grade level.

Self-Directed Learning Program

The Self-Directed Learning (SDL) program is a dropout recovery program for older students who have been away from school for a protracted period of time or who are two years or more behind in credits. The average age of students in SDL is approximately 18.5 years. These older students focus on literacy, numeracy, and credit recovery. There are three distinctly different outcomes expected from the program:

- re-entry into the College Fast-Track program upon recovering credits and developing pro-academic habits,
- graduation from high school, or
- preparation for the GED or the world of work.

Innovative Practices and Implementation

The College Fast-Track Program has seven 55-minute academic periods and one 30-minute advisory period. Academic classes are taught by teachers who are keenly

attuned to working with students at risk and students in poverty. Teacher-led classes (TLC) have a traditional delivery style with students simultaneously engaging in lessons designed and facilitated by the instructor. Students are also able to enroll in self-directed learning (SDL) classes. These classes are asynchronous; students may work at their own pace and ask the teacher for help when they need it. The vehicles for delivering the instruction in SDL classes are the following:

- Apex Virtual classroom, an online suite of classes in most discipline areas;
- ALEKS, an online suite of mathematics courses; and
- experiential learning – including projects, service learning, place-based learning, active learning, and problem-based learning

Since the adoption of the Circle of Courage™ philosophy as a conceptual framework for working with young people during the 2011-2012 school year, AFA has become a truly therapeutic school. The Circle of Courage™ is derived from Brendtro, Brokenleg, and VanBockern's (2001) *Reclaiming Youth At Risk: Our Hope for the Future*. The four basic components of human development are at the four principle compass points on the Circle of Courage™: Belonging, Independence, Mastery, and Generosity. Teachers and staff are trained bi-annually in restorative practices and keenly understand the needs of young adults at risk. Since its adoption, AFA has added a five member social work department, added a teacher to each academic department, added two teachers and six paraprofessionals to the Special Education program, and developed a student-led partnership with First Universalist Church to provide a food, hygiene and clothing closet for students facing barriers to their education.

As a deliberate strategy to increase *Belonging* at AFA, we started a morning advisory period every day for 30 minutes. Each day during Advisory, students participate in peacemaking circles with 10-25 of their peers and one-three teachers and paraprofessionals. The circles bring out students' thoughts and feelings on topics of the day, establish the basis for respect and friendship among students, and group students into teams for service learning projects. These service projects promote the value of *Generosity*. Anecdotal data show a strong correlation between the launching of daily peacemaking circles and continued improvement in school climate during the 2014-2015 school year.

Since the adoption of daily Advisory and the Circle of Courage™ philosophy, the first cohort that enrolled as freshmen graduated on May 28, 2015. These students maintained a strong, support network over the course of four years in high school and graduated on time. They remain supports to one another currently as they begin their post-secondary journey to college and careers.

School-Wide Goals from 2014-2015

In the Fall of 2014, the Academy's Lead Teacher, Heidi E. Anderson set forth four school-wide goals for students:

1. Students will improve reading and math proficiencies by 1.5 years during the school year.
2. Student attendance will increase by 10% from 2013-2014.
3. Students will build a community based on caring, helping, and respect among themselves and the adults at AFA.
4. All students will engage in rigorous, relevant, and meaningful service learning projects.

Goals Achieved

The Response to Intervention program was a success again in 2014-2015. The improvement to the program resulted in 21 students reaching their goals of increasing their reading skills by 1.5 grade levels or more; 6 increased by 1.0-1.4 grade levels, 16 increased between 0.1-1 grade levels; 13 were at or above grade level; and 71 were not tested enough to determine accurate growth levels. In math, 25 students increased their numeracy levels by 1.5 grades or more; 10 increased between 1.0-1.4 grade levels; 11 increased between 0.1-1.0 grade levels; 28 total scored at or above grade level; and 73 were not tested enough to determine accurate growth levels. The level of growth for students who received the most number of contact minutes in the RtI program outperformed their peers by wide margins. Attendance and accepting help were the key variables deciding amount of growth.

Truancy and daily attendance is the biggest challenge to the fulfillment of our mission and vision. The daily attendance rate for the 2014-2015 school year was 65%, which is a 25% improvement from the 2013-2014 school year. This is a resounding success and confirmation that our effort to improve student attendance is working. In order to make significant gains in student achievement, the Academy must continue to work with students, families and community partners to improve the attendance rate. The Check & Connect program, adopted by AFA in 2011, is the framework from which to work with students who are truant. Check & Connect, a nationally renowned program developed by researchers at the University of Minnesota for dropout prevention. This program has contributed to the significant improvement in student daily attendance and lower truancy rates.

School Year	ADM	Attendance Rate	Percentage Change
2012-13	145.2	34%	N/A
2013-14	152.44	40%	+6%
2014-15	129.29	65%	+25%

The effort to improve school climate and peer relations was a resounding success. The 30-minute advisory period each morning continued, with the addition of breakfast. During this time students and teachers engaged in discussions that were light-hearted, philosophical, moral, or ethical; physical activities and games; and strategic planning sessions for service learning projects. Students who were not socially connected in the beginning of the year developed strong friendships with their teacher and each other. The harmony among students was palpable. This improved the morale of the students and staff considerably from previous years, and increased the number of students eating breakfast in the morning. Student initiated clubs after school, after school tutoring and monthly Family Nights also helped to promote belonging and improved school climate. Attendance doubled over the 2013-2014 school year from 12 to 26 student and family members in attendance on average during the 2014-2015 school year.

Students engaged in many experiential learning activities. The following is an abridged list of experiential learning activities from the school year:

- Packaging meals at Feed My Starving Children
- Native American College Fair with over 45 post-secondary institutions
- Health, Helping and Trade Career Fair
- Quarterly speaker series sponsored by Success for the Future Grant
- Field trips to the Highpoint Arts Center, Q-Quest, WE Day, Minnesota History Center and Central Library
- AFA Hope Club – managed and distributed food, hygiene and clothing items
- Public Achievement leadership group meetings

Goals Partially or Not Achieved

Our test scores from 2014-2015 were lower compared to the rates from the prior years. The chart below displays MCA Math and Reading test results. Due to tiny sampling sizes, the impact of any individual student on the overall school results is substantial. The switch from paper-based to the required online testing format had great impact on student performance. Three students were unable to test and seven were unable to complete their tests due to testing system interruptions. The Commissioner of Education released a report stating that testing system interruptions had no impact on overall testing scores. This is not the case for students at AFA.

	# Students Taking the MCA Reading Test	# Students Scoring Proficient or Better on MCA Reading Test	% Proficient on MCA Reading Test	# Students Taking the MCA Math Test	# Students Scoring Proficient or Better on MCA Math Test	% Proficient on MCA Math Test
2010-2011	19	7	36.8%	15	2	13.3%
2011-2012	5	2	40%	14	1	7.1%
2012-2013	18	1	5.6%	21	2	9.5%
2013-2014	14	4	28.6%	13	1	7.7%
2014-2015	16	2	12.5%	18	0	0%

The number of students behind grade level in literacy and numeracy skills at AFA is disproportionally high compared to the local district (Minneapolis Public Schools). The challenge is daunting, and we will see gains in the future due to our strategic increased funding and staffing for these specific purposes.

School-Wide Goal Challenges and Responses

The five main challenges for both programs are truancy, low literacy, low numeracy, credit deficiency, and underdeveloped social skills. As described previously, AFA continues to implement the Check and Connect program, which has proved successful in improving student attendance and decreasing student truancy. As the attendance rate improves annually, partnerships with community partners such as The Bridge for Youth, Little Earth of United Tribes and Hope Street must be strengthened because AFA cannot be the only organization reaching out to our highly transient student population. Our social work department works daily to build new partnerships and strengthen on-going partnerships.

Low Literacy and Numeracy

Reading and math literacy is a significant issue at Augsburg Fairview Academy. Renaissance Place RtI Star Assessments are used to diagnose math and reading levels for all students at AFA (Renaissance Learning). Using this data, students are identified for reading and math interventions. Of the 47 students completing the reading diagnostic during the September screening, 14 students (30%) were identified as needing “urgent intervention,” 7 students (15%) were identified as needing “intervention,” 11 students (23%) were identified as “on watch,” and 15 students (32%) were identified as “at or above grade level.”

Of the 27 students completing the math diagnostic during the September screening, 15 students (56%) were identified as needing “urgent intervention,” 9 students (33%) were identified as needing “intervention,” 3 students (11%) were identified as “on watch,” and 9 students (33%) were identified as “at or above grade level.”

The number of students at Augsburg Fairview Academy with literacy and numeracy deficiencies is staggering. Students that are in need of “urgent intervention” are defined as being below the 10th percentile on a nationally normed assessment, and those needing “intervention” are below the 25th percentile, but above the 10th percentile. That means that in reading, 45% of the students at AFA were below the 25th percentile and in math, 89% of the students were below the 25th percentile.

The Academy has continued with its Response to Intervention (RtI) program in order to combat below grade level literacy and numeracy. The program used a “push-in” approach to add more adult helpers in the classrooms. Students eventually became comfortable enough with the interventionists to leave the room for small group, pull-out services. This was a subtle change that made a significant improvement in perceptions of the RtI program; and consequently, students who participated saw significant gains. Letter grades of students who participated in RtI were considerably higher than their peers as is shown in Appendix F.

Credit Deficiency

Students at Augsburg Fairview Academy have significant credit deficiencies. At AFA, students need a minimum of 22 credits to graduate, where 1.0 credit is equivalent to one year of a course (145 hours). Students should be earning at least 5.5 credits per year with the potential to earn 7.5 credits each year for a 26-credit “Mastery Diploma.” Most students are far enough behind that they will not graduate in four years. In a random sampling of ten students (two third-year students, three fourth-year students, and five fifth-year students), the mean number of credits students were behind the minimum was 5.2.

The Academy fully acknowledges that students who attend are generally behind in credits. We believe that we do a great job in supporting students who are on the verge of dropping out or have been disenfranchised by other schools. Although the failure rates of our students are quite high and the credit deficiencies are pronounced, the persistence rates of our students are also high. The combination of teacher coaching, nurturing, and positive framing; a focus on developing literacy and numeracy; and the campaign to strengthen student-to-student connectedness have all contributed significantly and synergistically to keep students coming back until they are ready to graduate at a college-ready level.

Underdeveloped Social Skills

Circumstances have placed almost all of the students at Augsburg Fairview Academy in some form of at-risk designation. The developmental risk factors discussed previously have required students to develop defense mechanisms and coping strategies that work for them in the greater community, but hinder them in school, work, and the White power structure of society. Such asocial, antisocial, or egocentric behaviors include the following: irritability and aggressiveness, repeated lying, impulsivity, consistent irresponsibility, deliberate annoyance of others, blaming others for mistakes or misbehavior, and active defiance or refusal to comply with adults' requests or rules.

These patterns of behavior are manifest on a daily basis at the Academy. Our staff's knowledgeable, caring, and assertive responses to these behaviors is a hallmark of the Circle of Courage™ philosophy, the Authoritative Teaching philosophy, the Non-Coercive Discipline philosophy, the Response Ability Pathways (RAP) knowledge base and skill set, the Life Space Crisis Intervention (LSCI) knowledge base and skill set, and the Circle Process and Restorative Justice best practices that are the pillars of support for students. During the 2013-2014 school year the school identified the need for on-site RAP training and training on cultural competency. These efforts made significant improvement in the rapport between students and staff and continues to resonate during the current school year.

Overall Results

Of the 25 students who participated in the graduation ceremony in May, 23 students indicated that they would be attending post-secondary educational institutions. This is a rate of 92%. This is much higher than the Minnesota rate of 71%, higher than the National average of 68%, and even higher than the Minneapolis average of 61%.

The Minnesota Department of Education calculates each school's graduation percentage by the number of students who finish high school within four years since they began. Their calculations for AFA's graduation percentage are as follows: 10 out of 53 students who began high school four years earlier graduated. This is a rate of 19%. The fallacy of measuring our school on this rate is that the vast majority of our graduates did not start their high school careers with us. **By-and-large**, these students languished in their previous schools, got far behind in credits and then transferred. This process repeated for many students until they found Augsburg Fairview Academy.

If one looks at the students who started with us as 9th grade students and stayed with us four years, the number jumps to 7 out of 8 or 87.5%. We believe our mission and vision compel us to work with students who have had setbacks in life. We do not give up on students if they are significantly behind in credits. Moreover, instead of dropping out of high school, as is very common with students who are far behind in credits, our students continue with their education and eventually graduate. They then go to college. Our role as a school is to work with students who would likely drop out and transform them into college students.

Future Plan: School-Wide Goals for 2015-2016

Augsburg Fairview Academy's Interim Lead Teacher, Heidi Anderson, declared the following four goals for the 2015-2016 school year:

1. Students will improve reading and math proficiencies by 1.5 years during the school year.
2. Student attendance will increase by 10% from 2014-2015.
3. Students will build a community based on caring, helping, and respect among themselves and the adults at AFA.
4. All students will engage in rigorous, relevant, and meaningful service learning projects.

These four goals continue to focus on the qualities prominent in our mission and vision: developing habits of college-readiness, practicing healthful habits of mind and body, and building a close-knit community of learners.

Charter Contract Goals and Update

In the Spring of 2014, Augsburg Fairview Academy's charter with Augsburg College was renewed for five years; July 1, 2014 – June 30, 2019. Three Academic and Non-Academic goals were set. The following is an update on the charter contract goals.

Academic Goals

Goal 1: Increase MMR Rating by 10% each year for five years. Formative assessments at approximately 9-week intervals throughout the school year using computer-based MCA Math, Reading and Science Assessments*. MMR score will reach 20 in five years.

*The formative assessment used is incorrect. Augsburg Fairview Academy implements the STAR Reading and Math assessment, housed at Renaissance Learning, every 6-9 weeks.

Goal 2: Response to Intervention data will demonstrate academic growth, equivalent to at least one grade level per school year in reading and math. Proficiency demonstrated by Grade equivalency score on STAR Reading and STAR Math assessments from Renaissance Learning. Formative assessments at approximately 6-week intervals throughout the school year using computer-based STAR Assessments (incorporating computer-adaptive testing and item response theory to provide nationally normed measures of skill. Star Proficiency growth: ____%* of students will show one grade level of growth on STAR Assessment grade equivalency score.

*This percentage is blank in the charter goals. Upon further consideration, our goal is for 50% of students to show one grade level of growth on the STAR Reading and Math assessment grade equivalency score, and improve that percentage by 5% each year.

Goal 3: The Academy will make adequate progress in improving the percentage of graduates accepted into post-secondary educational institutions. Assessment of College Readiness determined by the following: Performance on an ACT/Accuplacer exam, acceptance into a post-secondary institution. School's post-secondary acceptance rate will equal or exceed 85% or it will show a 2% increase over the rate from the previous year. School will demonstrate a 2% increase or greater over the previous year in the number of students judged ready for college coursework without remediation, based on their performance on the indicated tests.

Goals Achieved

It is difficult to measure whether or not Augsburg Fairview Academy exhibited growth according to the Multiple Measurement Rating System. At the end of the 2013-2014 school year, the Academy did not qualify for a rating, as evidenced by the information found in the Minnesota Report Card found at: http://rc.education.state.mn.us/#MMR/orgId--74111010000_year--2014_p--1

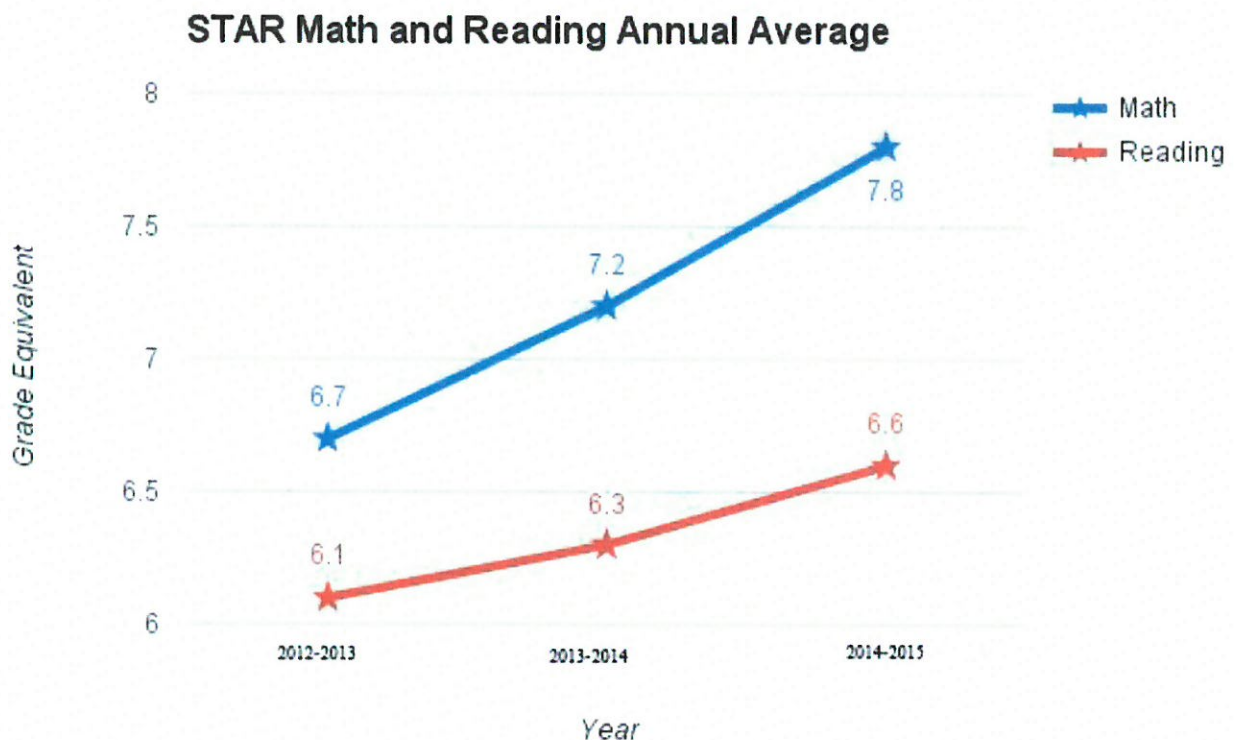
At the end of the 2014-2015 school year, the Academy did earn a rating of 13.61% and received a focus school designation. The Executive Team attended monthly focus school meetings at the Minnesota Department of

Education to network with other focus schools, create dialogue on achievement issues unique to our schools and discuss best practices to improve academic standing according to the MMR. These meetings were very positive and the Executive Team looks forward to continuing this process and implementing strategies brought back from the meetings.

With a rating of 13.61% as a baseline moving forward, we are on track to reach a rating of 19.91%, nearly 20%, by the 2018-2019 school year. The Academy is not turning a blind eye to the fact that academic growth is needed not only to improve our rating, but to improve the academic standing of our students. The Academy is focused on educational equity and recognizes educating the most disadvantaged students in Minnesota as a social justice issue.

Goals Partially or Not Achieved

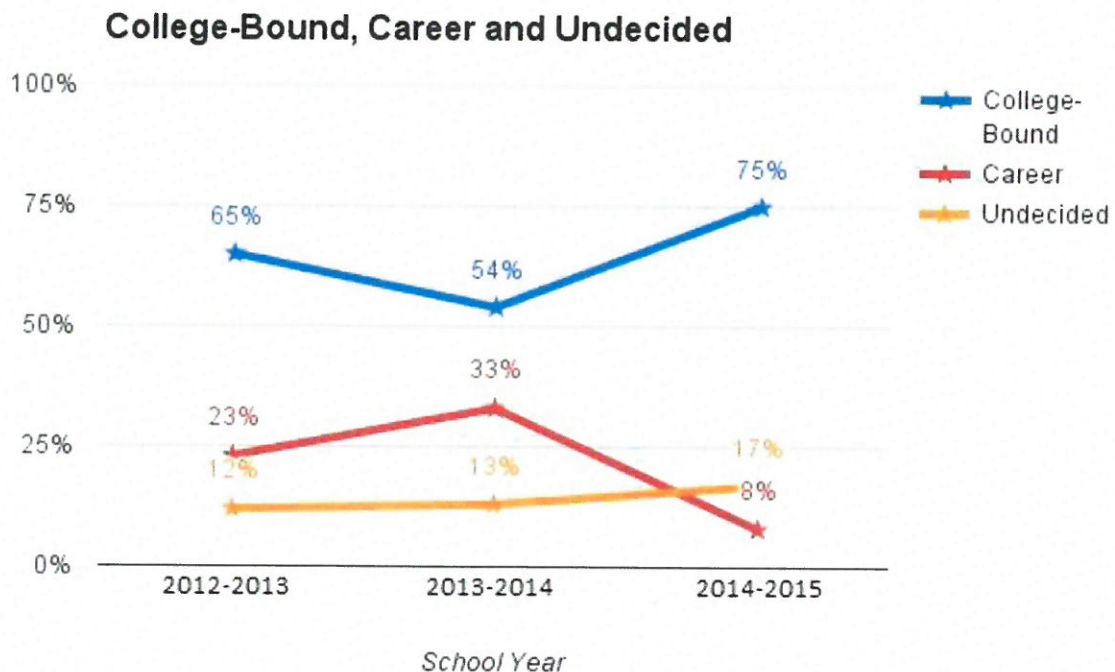
The second academic goal in our charter contract was partially achieved. The first week, last week and every six weeks in-between, students at the Academy complete STAR Reading and Math formative assessments. This assessment helps determine the grade equivalent in literacy and numeracy skills. Since the 2012-2013 school year, steady growth has been made in literacy and numeracy skills. The overall improvement rate may not have reached one grade level cumulatively during 2014-2015 school year, however, steady improvement was made as evidenced by the growth data below.



Another statistic to note is that of all students completing the STAR Reading and Math assessments two or more times throughout the school year, 60.9% showed one or more grade levels of improvement in math and 52.5% showed one or more grade levels of improvement in math. Most of these students received Response to Intervention services on a daily basis in addition to their regularly scheduled program.

The third academic goal was also partially met. It has proven harder to track post-secondary data accurately than anticipated when the goal was set. Once students graduate from Augsburg Fairview Academy, they are difficult to contact. Phone numbers, addresses and email addresses change on a regular basis, so it is challenging to confirm whether or not post-secondary goals were met. By the date of graduation, exit interviews are completed where post-secondary plans are reviewed and updated. Each student has the option of selecting a final status of college-bound, career-bound and undecided. Students understand up front that plans change and that after graduation, staff at the Academy are still available to assist with college and career plans for years to come.

According to exit interviews during the last three school years, our post-secondary entrance goals was partially met. Seventy-five percent of graduates in May of 2015 were accepted into a post-secondary program or were on track to complete enrollment. This does not meet or exceed the goal of 85%, however, it is a much greater improvement over the student exit survey results from the 2013-2014 school year.



Non-Academic Goals

Goal 1: The academy, with our students, will implement strategic plans to decrease educational barriers and improve overall rate of student attendance. Attendance/Membership: Data taken from Academy's MARSS student information system. Average daily attendance will increase by 5% each year.

Goal 2: Students will have at least two health and human service career-related exposures during each school year. Student participation in health and human service career-related activities. All teachers will provide a report to the board of the health and human service related events offered in their subject area and which students participated in these events. The benchmark will be set at ensuring that no student finishes a school year without having been offered at minimum of three documented opportunities to participate in health and human service career-related activities.

Goal 3: All AFA students will gain real world connections by engaging in experiential learning during each school year. Experiential Learning: Teachers will provide a report to the board of the experiential learning activities offered in their subject area and which students participated in these events. This could include Problem-based/inquiry based learning, project-based learning, service learning, and place-based learning. The benchmark will be set at ensuring that no student finishes a school-year without having been offered at minimum of three documented opportunities to participate in experiential learning activities.

Goals Achieved

The first non-academic goal set in the charter contract renewal identifies educational barriers students at the Academy face and recognizes that these barriers greatly impact attendance. As mentioned earlier, the expanded social work department in tandem with the student led Hope Club and volunteers from First Universalist Church work to address these barriers. If student primary needs are unmet, that student will struggle to be the best learner they can be. A food, clothing and hygiene product closet is maintained by the Hope Club and First Universalist Church. Providing healthy snacks when students are hungry is one way the Academy addresses barriers to education. Snacks help students who miss breakfast or experience hunger throughout the day get the essential nutrients they need, refocus and go back to class ready to learn. In the past, hungry students simply left school in search of nourishment, missing class. More students are now staying at school, as evidenced by the steady increase in our attendance rate the last three school year.

School Year	ADM	Attendance Rate	Percentage Change
2012-13	145.2	34%	N/A
2013-14	152.44	40%	+6%
2014-15	129.29	65%	+25%

The data in the chart on page 20 comes from our attendance rate based upon the Average Daily Membership overall attendance percentage on the last day of the 2014-2015 school year.

The second non-academic goal was also achieved. Students gained exposure to multiple health and helping career options in school-wide, individual and field trip opportunities. An abridged list of health and helping career related exposures follows:

Exposure
Addition of a school nurse that educates individual students on health and nutrition
Two health, one wellness and one yoga course options for students
Teen Outreach Program – pregnancy prevention program
Health & Helping Career Fair with over 20 organizations and 5 guest speakers
AFA Organic Gardening Program
Social Work Resource Fair with over 10 organizations and activities
Native and organic foods presentation
Science Museum field trip
Q-Quest field trip
WE Day field trip

After conducting a survey on the number of health and helping career exposures with a random sampling of 20 students from the 2014-2015 school year, 9 students participated in 6 of the exposures listed, 6 participated in 5, 2 participated in 3 and 3 participated in 2 of the exposures. The average number of exposures to health and helping careers from the random sample of students is 4.8 exposures.

The third non-academic goal was also achieved. All courses at the Academy offered at least one opportunity for experiential learning. An abridged list of experiential learning activities follows:

Exposure
Health class conducted a survey of students on dating and domestic violence.
Economics class developed and sold an AFA themed sweatshirt.
Government class wrote letters to local representatives.
Math class partnered with Public Achievement to address youth homelessness.
Art class created a fundraising page and created postcards to send as a thank you.
Dakota class learned beadwork.
College and Career Readiness class visited four college campuses.
General Science class learned parts of the cell by creating their own cells.
Fitness class worked to clean up the AFA outdoor campus in the spring.
Media Literacy class created propaganda ads after learning about infanticide.
Art class created prints about police brutality after the Michael Brown verdict.

Finances

A preliminary financial summary as of June 30, 2015 is included as Appendix G. It shows that the Academy maintained financial stability, continuity, and security of its operations and business infrastructure. A healthy fund balance that equals 15% of our 2014-2015 operating budget is available in case of emergency.

The Board is resolute that AFA should work its way to a 20% fund balance in case of state hold-back percentages that jeopardized the school budget 4-6 years ago. The established finance committee continues to meet annual to review the annual budget, purchase requests and strategic planning for the future. The 2015-2016 projected budget is included in Appendix H.

Authorizer Relationship and Evaluation Results

Augsburg College continues as the authorizer of Augsburg Fairview Academy. AFA's charter contract was renewed with Augsburg College for five years beginning June 30, 2014 through July 30, 2019. The Minnesota Department of Education mandated a more specific process for authorizers to evaluate their schools in 2010. This process involves a thorough audit by the authorizer's charter school liaison and a review by an authorizer committee to determine the status, terms, and duration of the renewal agreement. The charter renewal evaluation process conducted in 2014-2015 yielded a narrative (Appendix I) and a report card (Appendix J).

Authorizer Liaison

The authorizing agency of Augsburg Fairview Academy is Augsburg College.

Mailing address:

Augsburg College Education Department
2211 Riverside Avenue
Minneapolis, MN 55454-1351
Phone: 612.781.1462

Non-Profit Status

The following has been extracted from the publicly-available, current report from the Office of the Minnesota Attorney General:

Organization Name: AUGSBURG ACADEMY FOR HEALTH CAREERS

Organization Type: CHARITY

Contact Person: ATTN RICKY WHITE

Address: 2504 COLUMBUS AVE

City: MPLS

State: MN

Zip Code: 55404

IRS Code: 501(c) 03

Purpose or Description: Approved MN Charter High School, Grades 9-12

Focus on preparing students for post-secondary education and positions in the health careers.

Phone Number: (612) 333-1614

Status: ACTIVE

Appendix A: Curriculum Vitae of the Executive Director

Ricky White

7516 Mariner Drive, Maple Grove, Minnesota 55311
(612) 810-0299
fdrwhite@gmail.com

Educational Background

Graduate

January 2001
Masters of Education
Teachers and Learning

Saint Mary's University of Minnesota
2500 Park Avenue Minneapolis, MN

Undergraduate

May 1997
Bachelor of Education
Native Education

Lakehead University
Thunder Bay, Ontario

May 1997
Bachelor of Arts
North American Indian Studies

Lakehead University
Thunder Bay, Ontario

Secondary

June 1990
Ontario Secondary Schools Diploma

Beaver Brae Secondary School
Kenora, Ontario

Work Experience

July 2012-Present: Executive Director Nautkamegwanning First Nation Education
Duties. Planning and oversight of all aspects of school district operations and program.

July 2009-June 2012: Executive Director, Cedar Riverside Community School
Duties. Planning and oversight of all aspects of charter school operations and program.

March 2007-April 2009: Director, Minisinaakwaang Leadership Academy.
Duties. Planning and oversight of all aspects of charter school opening.

2001-2007: Saint Paul Public Schools School Quality Review Team.

Duties: Review and evaluate school programming throughout SPPS District.

2004-present: Anishinabe Consulting Company (ACC). Chief Executive Officer.
Duties: Consultant. Organizational development and program implementation.

2002-2007:

Battle Creek Middle School. Saint Paul, MN 55119 (651) 293-8960 (Peter Christensen)

Duties: Assistant Principal. Master Schedule, Transportation, and Leader of instruction.

2004 Summer:

Saint Paul Indian Education. Saint Paul, MN 55103 (651) 293-5191 (Kathy Wilke)
Duties: Consultant. Lakota Language and Culture curriculum development.

1997-2001:

Battle Creek Middle School. Saint Paul, MN 55119 (651) 293-8960 (Peter Christensen)
Duties: Lead Teacher/Chair American Indian Options Program.

Specialized Training

Charlotte Danielson's Framework for Teachers
Reid's Interview and Interrogation Techniques
Institute for Learning: Principles of Learning
Saint Paul Schools Gang Task Force 2001-2006
Saint Paul Schools Threat Assessment Team
Judo Black Belt Certified
Saint Paul Public Schools Leadership Academy for Administrators 2001
Kangus Associates: Board Governance
Minnesota Association of Charter Schools: Charter School Governance, Finance,
Charter School Law

Awards/Accomplishments

2008-Present Professional Learning Community of Twin Cities Charter School Directors.
2004-2006 Produced on field activities during Minnesota Twins Honoring American Indians.
2004 Keynote Speaker Saint Cloud American Indian Awards Banquet.
2004 Keynote Speaker Adult Education Whitefish Bay, Ontario.
2003 Keynote Speaker Anoka School District Indian Education Banquet.
2001 Minnesota *American Indian Teacher of the Year*.
2001-2003 Battle Creek Middle School (BCMS) Site Council Facilitator.
1997-2002 BCMS Chair of the American Indian Options Department.
2003 BCMS Leadership Group Chairperson.
2000 BCMS Staff Development Committee member.
2001 BCMS Chair of the Cultural Committee.
2000 Keynote Speaker at Bai Bom Beh High School Graduation.
1999 Consultant for Saint Thomas Summer Institute on Minnesota Graduation Standards.
1997 American Indian Options Program developer.
1990 Selected, "Homecoming King," by staff and students of Beaver Brae High School.
1990 Award Recipient; "Most Likely to Become Leader of the Anishinabeh People."
1986-1990 recipient of: High School Most Valuable Player in Volleyball and Basketball.
1986-1990: Selected Team Captain for NW Ontario's Regional Volleyball Team.
1986 Awarded the prestigious Citizenship Award as the most accomplished student in Jr. High.

Volunteer Work

2011-Present Innovative Special Education Services Board Member

2003-2008 Minnesota Select Girls Head Volleyball coach.

1997-2004 Led American Indian performances at various Nursing homes in Saint Paul. (Fresh Force)

1997-2004 Battle Creek Drum Group: Led youth in the traditional teachings of the Drum.

1997-2000 Cultural Group: Lead youth in the analysis of American Indian arts, crafts, and culture.

1997-2000 Indian Education Drum Group: Leader of the Tuesday Night Drum Group.

Hobbies

Member of the Whitefish Bay Singers. Renowned drum group that has performed worldwide.

Deep knowledge/experience of North American Indian cultures.

Fluent Speaker of Ojibwe Language: Extremely influenced by World Languages and Cultures.

Sports Enthusiast: Volleyball, Hockey, Basketball, and Baseball.

The Great Outdoors: Hunting, fishing, boating, and hiking enthusiast.

Explorative: Traveled to most North American cities/areas, Europe.

Current events: Intense follower of the constant developing world.

Movies: Weekly movie enthusiast.

Professional References

Mr. Peter Christensen

Executive Director of SPPS High Schools

(612) 382-3645

Ms. Elona Street-Stewart

SPPS School Board Vice-Chairperson

(651) 767-8121

Ms. Kathy Denman-Wilke

Director Saint Paul Indian Education

(651) 293-5191

Mr. Henry Flocken

Board Member Minisinaakwaang Leadership

(218) 209-7341

Appendix B: Curriculum Vitae of the Lead Teacher

Heidi E. Anderson

heidi.anderson@afa.tc
6821 Cedar Lake Road
St. Louis Park, Minnesota 55426
(612) 245-1844

Educational History:

<i>Master of Science: Educational Leadership</i> Minnesota State University-Mankato	May 2016
<i>Master of Arts: Public History</i> University of Wisconsin-Eau Claire	May 3, 2008
<i>Bachelor of Arts: Social Studies Education and TESOL Certification</i> University of Wisconsin-Eau Claire	May 21, 2005 May 18, 2007

Licensure:

Minnesota Department of Education 5-12 Social Studies: All	File Number: 438828	June 30, 2019
---	---------------------	---------------

Experience:

<i>Interim Executive Director: Augsburg Fairview Academy</i> <ul style="list-style-type: none">• Compliance oversight of fiscal, educational and human resource practices• Setting and agent and directly reporting to the AFA Board of Directors• Writing policies and reports• Contract writing and negotiation with staff• Mentor to Interim Lead Teacher	April 2015-Present
<i>Lead Teacher: Augsburg Fairview Academy</i> <ul style="list-style-type: none">• Used data-driven approaches to improve attendance, literacy, numeracy, assessment and instruction• Created and coordinated teacher professional development, supervision and evaluation calendar• Teacher coach and mentor• Led professional development on <i>Teach Like A Champion</i> (Lemov, 2010), Circle of Power and Respect and other teacher pedagogy• Managed student behavior interventions, developed behavior plans, facilitated family and school meetings regarding student behavior, and counseled students about positive behavior• Coordinated <i>Response to Intervention</i> (RtI) literacy and numeracy programs• Developed new master schedule based on the school's mission, vision and student academic, social and emotional needs	July 2012-June 2015

- Led hiring committees for teaching positions, the Executive Director position, and the Operations Manager position at AFA
- Initiated a school-wide tier system to improve student behavior responses and develop positive supports for students in crisis
- District Assessment Coordinator (DAC)
- Created and managed GoFundMe Account to raise over \$1000 for the AFA Arts Program

Social Studies Teacher: Augsburg Fairview Academy

July 2010-Present

- Designed and taught curriculum for World History and Geography, United States History, History Day Workshop, Psychology, Sociology, Political Science, and Economics
- Implemented Paideia seminars across all curriculum
- Incorporated National History Day curriculum with 43 completed projects
- Developed student behavior data collection and mapping to improve classroom management
- Apex Site-Coordinator, lead contact, and self-directed learning teacher
- Chairperson of school-wide Partnership meetings
- Mentored and advised pre-service teacher from Augsburg College
- Mentored and advised first year Music Teacher
- Mentored, advised, and evaluated AmeriCorps Promise Fellows
- Applied for and granted 5 AmeriCorps Promise Fellows
- Solicited monthly donations from health care companies
- Funding raising coordinator – holiday wreaths

School Board Inside Director: Augsburg Fairview Academy

Jan 2010-Aug 2012

- Successfully completed SBS School Board Training
- Elected school board Treasurer
- Collaborated with the Partnership and other Inside Directors to write and present monthly academic updates
- Executive Director hiring committee member and interview coordinator

Essentials Program Managing Teacher: Augsburg Fairview Academy

Aug 2008-June 2010

- Co-Developed and Managed Essentials Program for two years
- Hired and managed 6 content area teachers
- All school District Assessment Coordinator for one year
- Recruited and supported the needs of over 50 students
- Implemented Project-Based Learning for over 20 students
- Initiated and chaired weekly all-staff meetings with Essentials teachers
- Collaborated with the Executive Director, Operations Manager, staff, parents, and students to develop individualized curriculum and graduation plans
- Teamed with other teachers to develop all school budget and master schedule
- Elected to AFA Charrette Planning Team to adopt working school budget, master schedule, and charter renewal plan
- Awards Ceremony, Prom and Graduation committee member and coordinator
- Applied for and granted two AmeriCorps Promise Fellows

AmeriCorps Promise Fellow: Augsburg Fairview Academy

Aug 2007-Aug 2008

- Designed elective credit course and taught Social Studies class
- Developed Oral Health partnership with the University of Minnesota School of Dentistry
- Coordinated and developed weekly service projects with over 15 community partners
- Recruited over 75 adult mentors, tutors and other volunteers

- Recruited students for the 2007/2008 and 2008/2009 school years
- Implemented Friday Tutoring program
- Received Delta Dental: Serve-A-Smile \$1000 Grant
- Volunteered at many service projects and tutored at San Miguel Middle School

Professional Tutor: Professional Educational Services, Eagan, MN

May 2007-Aug 2009

- Created and managed Professional Education Services
- Developed lessons in correlation with individual school curriculum to help students get advanced preparation for the new school year
- Recruited additional tutors to meet the needs of my clients
- Taught new immigrants basic and academic English

Teacher: Barron High School, Barron, WI

June 2005-June 2007

- Designed and implemented Sophomore World History and ESL Social Studies curriculum
- District Electives Committee Member
- Tutored English to ESL students after school
- Implemented ACCESS tests to ESL students
- Junior class advisor
- Portfolio Committee Member
- Track and Field Coach with advancements to the state tournament

Professional Affiliations:

- | | |
|---|---------------------|
| • Minnesota Historical Society Member | March 2011- Present |
| • TESOL Member | Nov 2006-Present |
| • Wisconsin TESOL Member | Nov 2006-Aug 2009 |
| • Wisconsin Education Association Member | Aug 2005-Aug 2007 |
| • Phi Alpha Theta – Lambda Omicron Treasurer | Sept 2002-Jan 2005 |
| • Student Wisconsin Education Association (SWEA) | Sept 2002-June 2005 |
| • SWEA State Committee Member | Sept 2003-May 2004 |
| • SWEA Professional Development State Committee Chairperson | Sept 2003-May 2004 |

Professional Development:

- | | |
|--|----------------------------|
| • Charter School Law Conference | July 2012-2015 |
| • Star Schools Teacher Relicensure Committee | Sept 2012-Present |
| • Failure Free Reading Training | August 2013-2015 |
| • CPI: Nonviolent Crisis Intervention | August 2012-2013 |
| • Response to Intervention Training | June 2013 & 2015 |
| • Life Space Crisis Intervention 5-Day Training | July 2012 |
| • CPR/First Aid Training | March 2012 & 2014 |
| • Active Learning Professional Development | 2011-2012 |
| • Teach Like a Champion Training | 2010-2015 |
| • Restorative Justice and Peacemaking Circles Training | August 2011-2015 |
| • Augsburg College Paideia Institute Cohort Member | August 2011-2014 |
| • Ready or Not Writing Workshop | November 2009 |
| • Response Ability Pathways Training | June 2009, Aug 2013 & 2015 |
| • District Assessment Coordinator Training | January 2009 & 2014 |

2014-2015 ANNUAL REPORT – Augsburg Fairview Academy, District #4111

- | | |
|---|--------------------|
| • Center for School Change – Charter School Leadership Academy | June 2009-Aug 2011 |
| • Muslims and Islam in Minnesota Schools Conference | November 2008 |
| • Wisconsin Historical Society U.S. History Teacher Recognition | May 2008 |
| • Graduate Certification in Public History | May 2008 |
| • Teaching with Love and Logic Conference | April 2007 |

Grants Awarded:

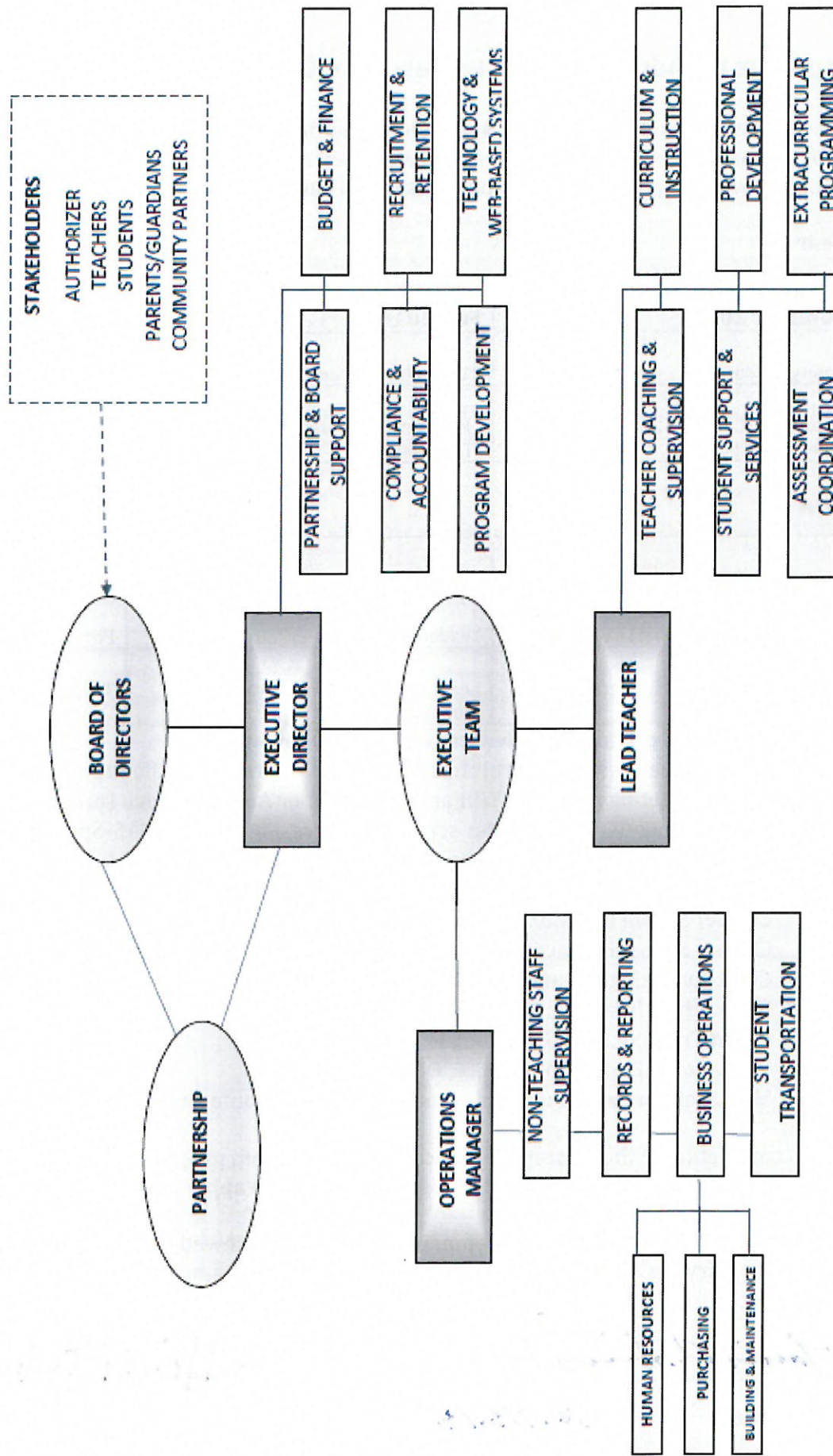
- | | |
|-------------------------------------|-----------------|
| • AmeriCorps Promise Fellow Program | March 2010-2014 |
| • Delta Dental Grant Recipient | April 2012 |
| • Serve-A-Smile Grant Recipient | March 2008 |

Volunteer Work:

- | | |
|-----------------------------|---------------------|
| • Underdog Rescue | June 2012-Present |
| • Animal Humane Society | August 2008-Present |
| • Bethel's Rock Food Pantry | July 2013-Present |
| • Feed My Starving Children | Annually |

Appendix C: AFA Organizational Chart for Management and Governance

AUGSBURG FAIRVIEW ACADEMY ORGANIZATION CHART: 2014-2015



Appendix D: Administrative Professional Development Plan

Ms. Anderson enrolled during 2014-15 school year in the Masters of Educational Leadership program at Minnesota State University at Mankato. As part of her Professional Development Plan, she will complete the following courses and earn a Master's in Educational Leadership:

Year 1

Summer 2014	Fall 2014	Spring 2015
Equity & Education	21 st Century Leadership	Organizational and Systems Change
Leadership Communication in Educational Settings	Program Evaluation in Educational Leadership	Multicultural Leadership

Year 2


Summer 2015	Fall 2015	Spring 2016
Research in Educational Leadership	Leadership Studies	Portfolio Evaluation
Ethics in Educational Leadership	Leading Professional Learning Communities	Thesis


In addition to this program, she will complete the following:

- Mentor meetings with Bart Johnson, Executive Director of Life Prep Academy
- Mentor meetings with Dr. William Spira, former AFA Executive Director
- Network meetings for charter school directors, MACS, Fall 2015-Spring 2016
- Training on Title 1 & 2 Funding, MDE, Plymouth, MN, June, 2015
- Training on FERPA and Data Privacy, MDE, Roseville, MN, June, 2015
- Charter School Law Conference, University of Minnesota, July, 2015
- Charter School Finance Training, MDE, Roseville, MN, August 2015
- Child Count Criteria and MARSS Training, MDE, Webinar, Sept. 2015
- Be @ School Training, Minnetonka, MN, October, 2015
- Board Training, MACS, St. Paul, MN, October, 2015
- Educational Equity Conference, October 2015
- Minnesota Indian Education Association Annual Conference, November, 2015

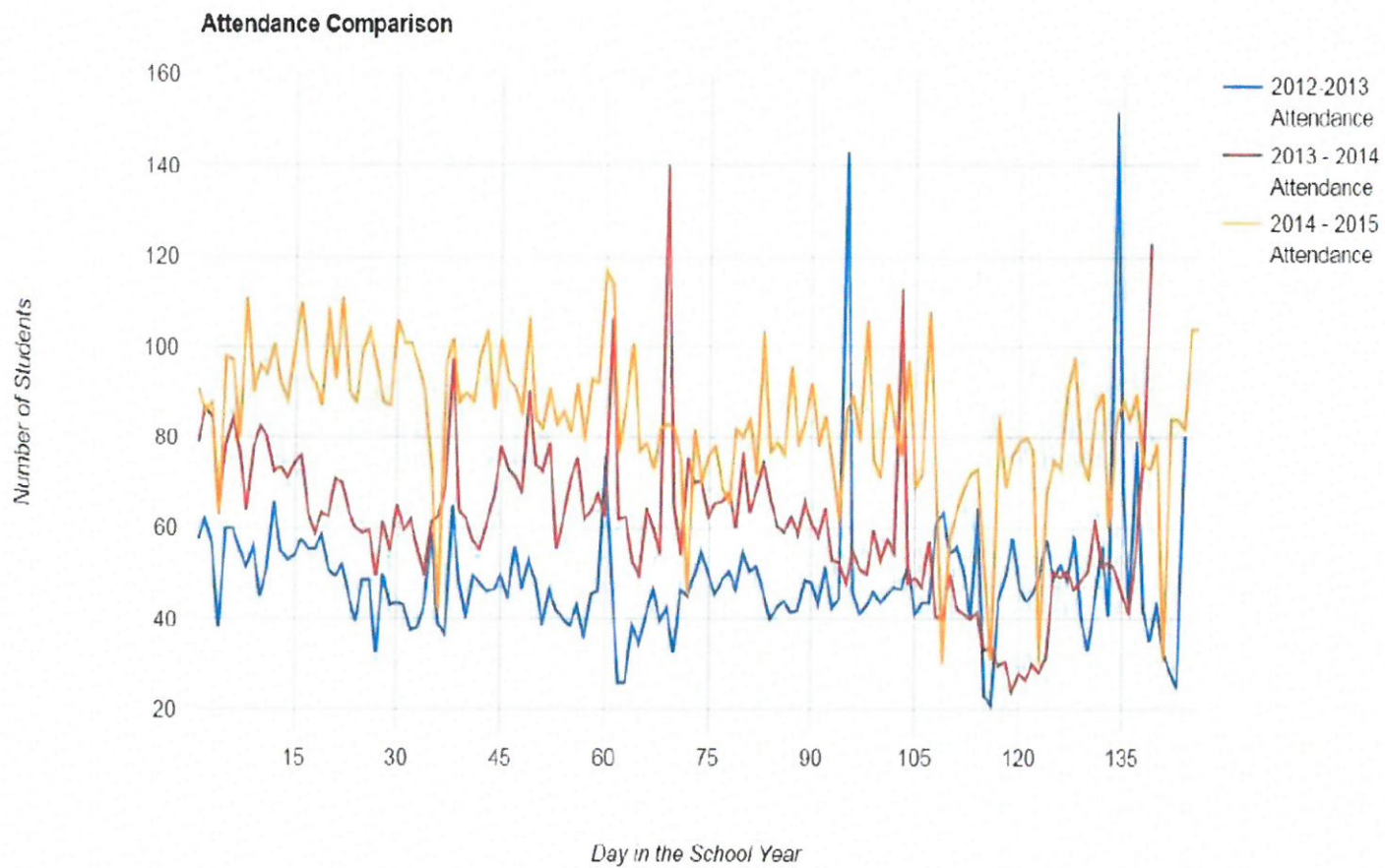
Upon completion of the Master's in Educational Leadership program, Ms. Anderson will enroll in the Educational Specialist program. She will be eligible to apply for a Principal license.

Ms. Anderson's Professional Development Plan will be reviewed and updated quarterly by the Augsburg Fairview Academy Board of Directors at the November, February, April and June meetings.


 Louis Smith
 Board President
 Date 10.23.15


 Heidi E. Anderson
 Interim Executive Director
 Date 10/23/15

Appendix E: Attendance Data Comparison



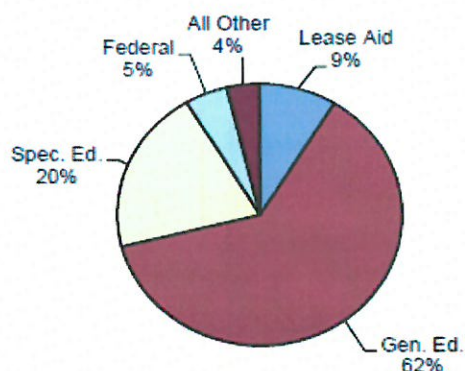
Appendix F Ending Financial Statement, June 30, 2015



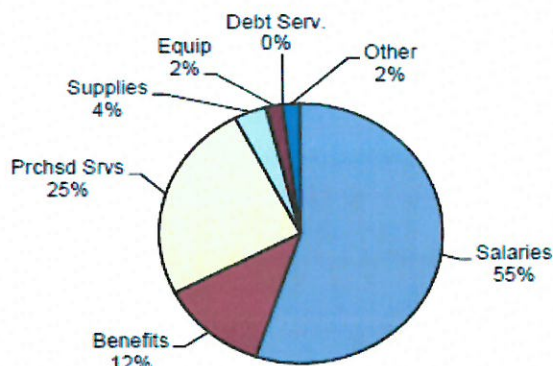
Augsburg Fairview Academy Financial Dashboard for: 6/30/2015

Full Year Budget (Accrual)

Where the money is budgeted to come from:



Where the money is budgeted to be spent:



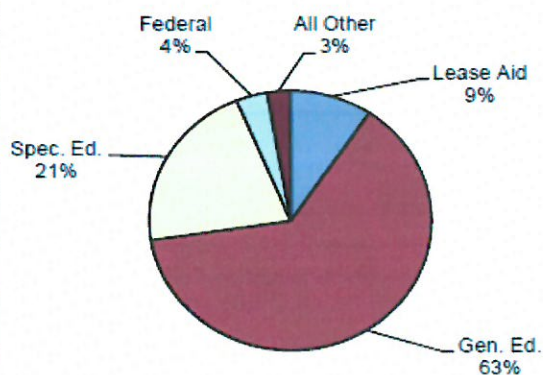
Student Count

Actual Current ADM:

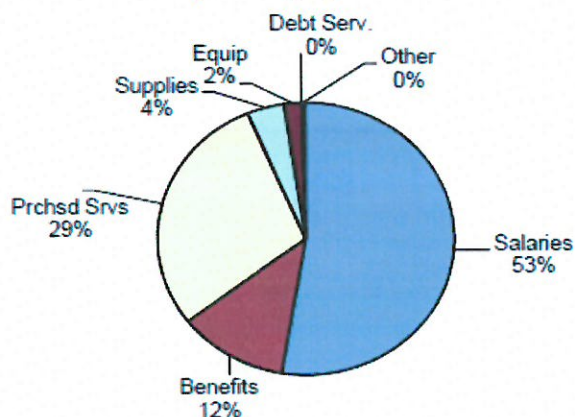
ADM from Budget: 132 ADM

Year to Date Actual (Cash)

Where the money is coming from:



Where the money is being spent:



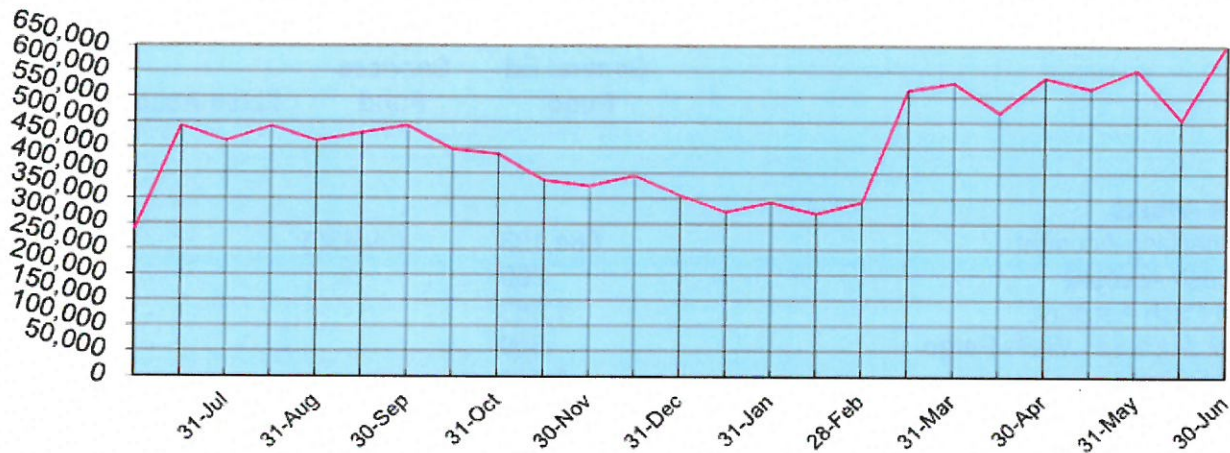
	YTD Actual		YTD Budget Target	
Revenue	\$2,512,503.57	106%	\$2,360,760.57	100%
Expense	\$2,155,497.47	91%	\$2,357,235.49	100%
Change in Fund Balance	\$357,006.10		\$3,525.08	



Augsburg Fairview Academy

Financial Dashboard for: 6/30/2015

Cash Balance Projection



Grants and Other Awards:

Description	Award	Spent PFY	Actual CFY	Remaining	Expiration Date
		Not Applicable			

Comments:

General Comments:

The School has a reconciled cash balance of \$655,829 on June 30th.

Over the next couple months, the FY15 accruals will be calculated and entered in preparation for the annual audit. This will include finalizing the FY15 holdback numbers and salaries payable for FY15 along with other misc. revenues and expenditures.

Revenue:

In June the school received \$207,231 in revenue bringing the year to date receipts to \$2,512,504. This represents 106% of the adopted revised revenue budget and 105% of the working budget.

Expenses:

During the month, Augsburg Fairview Academy incurred expenditures of \$147,849. The year to date expenditures total \$2,155,497 representing 91% of the adopted revised expense budget and 89% of the working budget.

These financials were compiled from information supplied by school management. They are unaudited and should be used for management purposes only.

**Augsburg Fairview Academy
Balance Sheet
Fiscal Year 2015
For the Period Ending June 30, 2015**

	General Ed Fund	Food Services Fund	Fixed Assets	Total
Assets				
Current Assets				
Main Checking Account	684,103	(29,435)	-	654,669
Petty Cash Account	300	-	-	300
Insured Cash Account	1,363	-	-	1,363
Transfer Account - Wells Fargo	860	-	-	860
State Receivable	6,471	-	-	6,471
Prepaid Expenditures	33,367	-	-	33,367
Total Current Assets	726,463	(29,435)	-	697,029
Fixed Assets				
Building Improvements	-	-	74,624	74,624
Furniture & Equipment	-	-	232,620	232,620
Accum. Depreciation on Improvements	-	-	(6,368)	(6,368)
Accum. Depreciation on Furniture & Equipment	-	-	(180,229)	(180,229)
Total Fixed Assets	-	-	120,646	120,646
Total Assets	726,463	(29,435)	120,646	817,675
Liabilities & Fund Balance				
Current Liabilities				
Accounts Payable/Payroll Liabilities	12,462	765	-	13,227
Total Current Liabilities	12,462	765	-	13,227
Fund Balance				
Investment Fixed Assets	-	-	120,646	120,646
Audited Fund Balance - 6/30/2014	326,795	-	-	326,795
FY15 Net Income	387,206	(30,200)	-	357,006
Fund Balance Subtotal	714,001	(30,200)	120,646	804,447
Total Liabilities and Fund Balance	726,463	(29,435)	120,646	817,675

State Holdback Calculation:

**Total Fiscal Year School Budgeted State Revenues	2,202,357
Fiscal Year-to-Date (12 of 12 months)	100%
Total Fiscal Year-to-Date Budget (June 2015)	2,202,357
State Holdback Percentage	10%
Total Estimated Year-to-Date Holdback	<u><u>220,236</u></u>

Augsburg Fairview Academy
Summary Income Statement
Fiscal Year 2015
For the Period Ending June 30, 2015

	June Activity	Year-To-Date Activity	FY15 Revised Budget 132 ADM	% of Budget	FY15 Working Budget 130 ADM	% of Working Budget
General Ed - Fund 01						
Revenues						
State Revenue						
Land Endowment	-	6,335	4,105	154%	4,278	148%
General Education Aid	-	1,579,679	1,466,788	108%	1,491,083	106%
Teacher Development & Evaluation	3,987	3,987	-	N/A	3,987	100%
Success for the Future	-	36,874	41,899	88%	40,971	90%
Charter School Lease Aid	159,440	238,950	208,138	115%	204,984	117%
Special Education Aid - State	35,857	531,332	480,638	111%	479,055	111%
Total State Revenue	199,284	2,397,157	2,201,567	109%	2,224,358	108%
Federal Revenue						
Federal Special Education Aid	1,930	28,733	32,474	88%	32,409	89%
Title I	3,551	38,639	51,024	76%	50,433	77%
Title II	-	418	4,448	9%	4,448	9%
Federal CEIS	338	3,541	5,691	62%	7,099	50%
Total Federal Revenue	5,819	71,331	93,637	76%	94,388	76%
Other Local Revenue Sources						
Donations	-	8,651	200	4326%	8,700	99%
Miscellaneous Local Revenue	-	15,514	9,200	169%	15,500	100%
Total Other Local Sources	-	24,166	9,400	257%	24,200	100%
Total Revenues	205,103	2,492,653	2,304,604	108%	2,342,946	106%
Expenses						
Administration						
Salaries and Wages	6,926	145,329	143,513	101%	151,459	96%
Benefits	1,506	47,052	52,870	89%	48,405	97%
Purchased Services	27,388	147,698	111,941	132%	156,119	95%
Supplies & Materials	2,394	14,298	13,500	106%	14,400	99%
Equipment	-	2,310	2,500	92%	2,500	92%
Dues & Memberships	-	4,124	4,124	100%	4,124	100%
Total Administration	38,214	360,811	328,448	110%	377,007	96%
School Wide						
Salaries and Wages	10,137	141,734	151,127	94%	146,098	97%
Benefits	2,593	30,220	30,096	100%	33,282	91%
Purchased Services	510	7,305	11,150	66%	7,110	103%
Supplies & Materials	277	22,365	27,981	80%	25,581	87%
Equipment	-	21,155	22,500	94%	22,075	96%
Total School Wide	13,517	222,780	242,853	92%	234,145	95%
General Education						
Salaries and Wages	32,846	354,090	421,335	84%	421,335	84%
Benefits	6,422	81,059	89,741	90%	92,059	88%
Purchased Services	267	5,519	6,600	84%	6,600	84%
Supplies & Materials	590	6,936	6,100	114%	7,021	99%
Dues & Memberships	-	3,341	5,600	60%	3,341	100%
Total General Education	40,125	450,945	529,376	85%	530,356	85%

Augsburg Fairview Academy
Summary Income Statement
Fiscal Year 2015
For the Period Ending June 30, 2015

	June Activity	Year-To-Date Activity	FY15 Revised Budget	% of Budget	FY15 Working Budget	% of Working Budget
Success for the Future						
Salaries and Wages	566	26,413	29,828	89%	29,100	91%
Benefits	101	3,979	4,476	89%	4,275	93%
Purchased Services	(8,749)	4,238	5,833	73%	4,238	100%
Supplies & Materials	1,898	3,356	1,763	190%	3,357	100%
Total Success for the Future	(6,184)	37,987	41,899	91%	40,971	93%
State Special Education						
Salaries and Wages	29,431	340,495	409,803	83%	407,191	84%
Benefits	6,236	72,702	80,704	90%	82,583	88%
Purchased Services	1,915	13,900	11,200	124%	13,995	99%
Supplies & Materials	-	461	500	92%	500	92%
Total State Special Education	37,582	427,558	502,207	85%	504,269	85%
Federal Special Education						
Purchased Services	613	26,674	28,850	92%	28,785	93%
Supplies & Materials	-	2,671	3,624	74%	3,624	74%
Total Federal Special Education	613	29,346	32,474	90%	32,409	91%
Federal Special Education - CEIS						
Salaries	3,558	7,099	4,100	173%	7,099	100%
Supplies	-	-	1,591	0%	-	N/A
Total Federal Special Education - CEIS	3,558	7,099	5,691	125%	7,099	100%
Title I						
Salaries and Wages	2,914	30,924	34,969	88%	34,833	89%
Benefits	589	8,218	9,100	90%	8,644	95%
Purchased Services	-	3,405	6,956	49%	6,956	49%
Total Title I	3,503	42,547	51,024	83%	50,433	84%
Title II						
Purchased Services	-	418	4,448	9%	4,448	9%
Total Title II	-	418	4,448	9%	4,448	9%
Instructional Support						
Salaries and Wages	-	1,285	1,285	100%	1,285	100%
Benefits	-	191	191	100%	191	100%
Purchased Services	-	1,894	3,000	63%	1,894	100%
Supplies & Materials	768	4,081	4,620	88%	4,100	100%
Total Instructional Support	768	7,450	9,095	82%	7,469	100%
Student Support						
Salaries	2,120	43,155	58,301	74%	48,151	90%
Benefits	497	8,054	13,139	61%	8,811	91%
Purchased Services	-	58,484	61,536	95%	58,484	100%
Supplies & Materials	153	3,934	5,500	72%	4,500	87%
Total Student Support	2,769	113,628	138,476	82%	119,946	95%

Augsburg Fairview Academy
Summary Income Statement
Fiscal Year 2015
For the Period Ending June 30, 2015

	June Activity	Year-To-Date Activity	FY15 Revised Budget	% of Budget	FY15 Working Budget	% of Working Budget
Facility						
Salaries and Wages	760	22,902	16,796	136%	22,902	100%
Benefits	113	3,375	2,503	135%	3,375	100%
Purchased Services	7,371	41,876	41,380	101%	45,199	93%
Lease Expense	-	313,893	295,000	106%	313,893	100%
Supplies and Materials	388	5,938	4,080	146%	6,000	99%
Equipment & Furniture	-	16,896	20,000	84%	17,000	99%
Fund Transfer	-	-	35,330	0%	36,449	0%
Total Facility	8,632	404,879	415,089	98%	444,819	91%
Total Expenses	143,097	2,105,447	2,301,079	91%	2,353,371	89%
Net Income/Loss - General Ed Fund 01	62,005	387,206	3,525		(10,424)	
Food Services - Fund 02						
Revenues						
Total State Revenue	62	712	790	90%	712	100%
Total Federal Revenue	2,065	19,139	20,036	96%	19,139	100%
Total Other Local Sources	-	-	35,330	0%	36,449	0%
Total Revenues	2,128	19,851	56,156	35%	56,300	35%
Expenses						
Salaries and Wages	2,138	21,445	30,123	71%	25,123	85%
Benefits	353	4,344	6,724	65%	4,787	91%
Supplies and Materials	2,261	24,001	19,100	126%	26,129	92%
Dues & Memberships	-	261	210	124%	261	100%
Total Expenses	4,752	50,051	56,157	89%	56,300	89%
Net Income/Loss - Food Services Fund 02	(2,624)	(30,200)	(0)		-	
Net Income(Loss) - All Funds	59,381	357,006	3,525		(10,424)	

2014-2015 ANNUAL REPORT – Augsburg Fairview Academy, District #4111

Augsburg Fairview Academy
Fiscal Year 2015
For the Period Ending June 30, 2015

Estimated Receipts by Category										Estimated Disbursements				Estimated
State Aids	State	Federal Aids	Federal	Other	Total Est.	Estimated Payroll	Building	Estimated	Total					Cash
CY	PY	CY	PY	Revenue	Receipts	Disbursements	Lease	Disbursements	Disbursements					Balance
										FY2015 Beginning				288,543
Jul 1-15	88,974	162,468	-	7,218	-	258,659				55,726	207	55,932	491,270	491,270
Jul 16-31	89,256	17	-	6,842	10	96,124	49,167	26,924	124,643	48,553		124,643	462,751	462,751
Aug 1-15	90,858	-	-	-	-	90,858	-	246	62,139	61,892		62,139	491,470	491,470
Aug 16-31	88,789	-	-	11,754	-	100,543	24,583	58,976	128,720	45,160		128,720	463,294	463,294
Sep 1-15	91,681	-	-	304	-	91,985	-	15,355	76,529	61,174		76,529	478,750	478,750
Sep 16-30	89,523	-	-	-	30	89,553	-	11,924	75,159	63,235		75,159	493,144	493,144
Oct 1-15	89,523	-	-	-	-	89,523	49,167	24,763	136,386	62,456		136,386	446,280	446,280
Oct 16-31	90,095	(14,700)	10,145	-	9,228	94,768	-	21,101	103,871	82,770		103,871	437,177	437,177
Nov 1-15	85,740	(9,720)	-	-	-	76,020	24,583	34,796	127,488	68,109		127,488	385,709	385,709
Nov 16-30	80,040	-	-	-	-	80,040	-	24,574	90,803	66,229		90,803	374,947	374,947
Dec 1-15	88,138	-	14,752	-	-	102,890	-	14,362	83,373	69,012		83,373	394,463	394,463
Dec 16-31	88,326	-	5,965	-	-	94,292	24,583	40,421	131,939	66,935		131,939	356,816	356,816
Jan 1-15	88,265	-	-	-	-	88,265	24,583	23,899	120,772	72,290		120,772	324,309	324,309
Jan 16-31	88,054	6,353	3,093	-	-	97,500	-	9,115	79,201	70,086		79,201	342,608	342,608
Feb 1-15	88,311	617	1,650	8,448	-	99,027	24,583	29,814	120,422	66,024		120,422	321,213	321,213
Feb 16-28	88,265	-	-	-	-	88,265	-	574	66,529	65,955		66,529	342,949	342,949
Mar 1-15	284,209	-	26,130	-	1,167	311,506	-	20,786	90,730	69,944		90,730	563,725	563,725
Mar 16-31	110,813	-	8,206	-	-	119,019	24,583	19,819	105,092	60,689		105,092	577,652	577,652
Apr 1-15	61,350	9,839	-	-	-	71,189	24,583	42,204	129,636	62,849		129,636	519,205	519,205
Apr 16-30	128,716	-	5,210	-	-	133,926	-	10,758	65,288	54,531		65,288	587,842	587,842
May 1-15	99,833	-	2,340	-	-	102,173	24,583	19,787	122,553	78,183		122,553	567,462	567,462
May 16-31	99,762	-	5,095	5,282	-	110,138	-	4,599	72,979	68,379		72,979	604,622	604,622
Jun 1-15	-	-	-	-	-	-	24,583	13,504	98,702	60,615		98,702	505,919	505,919
Jun 15-30	199,346	5,837	7,884	-	-	213,067	-	7,180	63,158	55,978		63,158	655,829	655,829
Total Estimates	2,397,868	160,710	90,470	26,118	24,166	2,699,331	319,583	475,688	2,332,045	1,536,774		2,332,045		
FY15 Budget	2,225,070	-	113,527	-	24,200	2,362,797	295,000	487,502	2,373,221	1,590,719		2,373,221	(10,424)	(10,424)
FY14 Accrual	-	167,181	-	26,118	-	193,298	-	14,004	151,847	137,843		151,847		
FY15 Accrual	(222,507)	-	(27,000)	-	-	(249,507)	24,583	(15,000)	(162,856)	(172,439)		(162,856)		
	2,002,563	167,181	86,527	26,118	24,200	2,306,588	319,583	486,506	2,362,212	1,556,123		2,362,212		
	395,306	(6,471)	3,942	-	(34)	392,743	-	(10,817)	(30,167)	(19,349)		(30,167)		

Appendix G: 2015-2016 Projected Budget

Augsburg Fairview Academy
Detailed Income Expense Budget Statement

		Year-To-Date Activity As of April '15	FY15 Approved Original (148 ADM)	FY15 Approved Revised (132 ADM)	FY15 Working Budget (130 ADM)	FY16 Proposed Original (140 ADM)	Difference
GENERAL FUND - 01							
REVENUE							
State Revenue							
01 R 005 000 000 000 201	Endowment Revenue	6,335.05	4,104.95	4,104.95	4,277.92	3,680.30	(597.62)
01 R 005 000 000 000 211	General Education Aid	1,408,240.55	1,570,937.55	1,486,787.64	1,491,082.65	1,459,757.76	(31,324.89)
01 R 005 000 000 320	Success/Future Grant	36,873.90	41,159.42	41,898.74	41,898.74	41,898.74	(0.00)
01 R 005 000 000 348	Charter School Lease Aid	79,510.00	233,366.40	208,137.60	204,984.00	220,752.00	15,768.00
01 R 005 000 000 740	Special Education Aid - State	467,389.63	470,553.10	480,638.06	477,193.54	503,455.23	26,261.69
Total State Revenue		1,998,349.13	2,320,121.41	2,201,566.99	2,219,436.85	2,228,544.02	10,107.17
Federal Revenue							
01 R 005 000 000 419	Special Education Aid - Federal	25,598.91	32,474.21	32,474.21	32,474.21	32,474.21	-
01 R 005 000 000 401	Title I	31,534.71	51,239.46	51,024.18	50,102.57	52,294.25	2,191.68
01 R 005 000 000 414	Title II	418.00	4,447.70	4,447.70	4,447.70	4,447.70	-
01 R 005 000 000 425	Federal CEIS	2,866.04	5,691.00	5,691.00	5,691.00	5,395.14	(295.86)
Total Federal Revenue		60,417.66	93,852.37	93,637.09	92,715.48	94,611.30	1,895.82
Other Revenue							
01 R 005 000 000 000 096	Gifts & Bequests	8,851.37	200.00	200.00	8,700.00	200.00	(8,500.00)
01 R 005 000 000 000 099	Misc Local Revenue	10,232.10	20.00	8,200.00	10,300.00	2,200.00	(8,100.00)
Total Other Revenue		18,883.47	220.00	9,400.00	19,000.00	2,400.00	(16,600.00)
TOTAL REVENUE		2,077,650.26	2,345,824.92	2,304,604.08	2,331,152.33	2,326,555.32	(4,597.01)
EXPENDITURES							
Administration							
Salaries							
01 E 010 050 000 000 110	Executive Director	59,081.91	77,430.25	72,750.00	72,750.00	74,932.50	2,182.50
01 E 010 050 000 000 170	Operations Manager	27,280.00	32,782.97	32,782.97	32,782.97	35,592.94	2,809.97
01 E 005 105 000 000 170	Records Specialist	22,714.54	15,231.91	23,947.31	23,947.31	18,068.66	(7,878.65)
01 E 005 105 009 000 170	Admissions Coordinator	-	19,982.00	-	-	-	-
01 E 005 107 000 000 170	Recruitment Coordinator	-	-	-	-	10,000.00	10,000.00
01 E 055 107 000 000 170	Summer Recruiting	13,616.05	14,032.50	14,032.50	19,699.17	11,333.33	(8,365.84)
Total Salaries		122,692.50	159,459.63	143,512.78	149,179.45	147,927.42	(1,252.03)

**Augsburg Fairview Academy
Detailed Income Expense Budget Statement**

		Year-To-Date Activity As of April '15	FY15 Approved Original (148 ADM)	FY15 Approved Revised (132 ADM)	FY15 Working Budget (130 ADM)	FY16 Proposed Original (140 ADM)	Difference
Benefits							
01 E 010 050 000 000 210	FICA - Executive Director & Operations Mngr	6,430.82	8,431.31	8,073.27	8,073.27	8,455.20	381.92
01 E 005 105 000 000 210	FICA - Records Specialist	1,691.79	1,165.24	1,831.97	1,831.97	1,229.25	(602.72)
01 E 005 105 009 000 210	FICA - Admissions Coordinator	-	1,528.82	-	-	-	-
01 E 005 107 000 000 210	FICA - Recruitment Coordinator	-	-	-	-	765.00	765.00
01 E 055 107 000 000 210	FICA - Summer Recruiting - AFA Staff	1,002.87	1,073.49	1,073.49	1,506.99	867.00	(639.99)
01 E 010 050 000 000 218	TRA - Executive Director/Operations Manager	6,545.27	8,265.99	7,914.97	7,914.97	8,289.41	374.44
01 E 005 105 000 000 214	PERA - Records Specialist	1,701.13	1,104.31	1,736.18	1,736.18	1,164.98	(571.20)
01 E 005 105 009 000 214	PERA - Admissions Coordinator	-	1,448.70	-	-	-	-
01 E 005 107 000 000 214	PERA - Recruitment Coordinator	-	-	-	-	725.00	725.00
01 E 055 107 000 000 214	PERA - Summer Recruiting	580.00	1,017.36	1,017.36	1,428.19	821.67	(606.52)
01 E 055 107 000 000 218	TRA - Summer Recruiter	298.29	-	286.29	286.29	-	(298.29)
01 E 005 105 000 000 220	Health Insurance - Records Specialist	2,494.08	2,027.49	2,498.61	2,498.61	6,764.86	4,268.25
01 E 005 105 000 000 235	Dental Insurance - Records Specialist	490.71	348.57	303.11	650.00	303.11	(346.89)
01 E 010 050 000 000 235	Dental Insurance - Executive Direct/Operator	202.10	390.20	339.30	202.10	-	(202.10)
01 E 010 050 000 000 220	Health Insurance - Executive Direct/Operator	1,042.25	2,261.25	1,975.50	1,042.25	-	(1,042.25)
01 E 005 105 000 000 270	Workers Compensation Insurance	7,441.00	7,500.00	6,000.00	7,441.00	7,441.00	-
01 E 005 105 000 000 280	Reemployment Insurance	6,752.55	9,500.00	12,000.00	7,600.00	9,500.00	1,900.00
01 E 005 105 000 000 299	Other Benefits	5,497.83	-	7,812.00	8,500.00	-	(6,500.00)
Total Benefits		42,158.49	46,062.52	52,870.04	48,719.82	46,326.47	(2,393.35)
Purchased Services							
01 E 005 010 000 000 305	Auditor/Board Training	7,600.00	8,364.00	8,364.00	8,364.00	8,364.00	-
01 E 005 105 000 000 305	Powerschool	5,244.00	6,000.00	6,000.00	6,000.00	6,000.00	-
01 E 005 105 000 000 306	E-Rate Consultant	3,200.00	3,200.00	-	3,200.00	3,200.00	-
01 E 005 107 000 000 305	Marketing	780.00	1,000.00	1,000.00	1,000.00	4,431.50	3,431.50
01 E 005 110 000 000 313	Augsburg College - Authorizer Fee (\$60.00 per	5,903.00	8,610.00	12,000.00	12,000.00	12,000.00	-
01 E 005 105 000 000 315	Management/Administration consultants	14,437.10	10,200.00	6,810.00	19,000.00	6,810.00	(12,190.00)
01 E 005 107 000 000 309	Recruiting Bonuses	1,252.00	8,415.00	6,000.00	2,400.00	4,000.00	1,600.00
01 E 005 107 000 000 311	Web Design	-	-	-	-	1,000.00	1,000.00
01 E 005 110 000 000 305	Finance Services	27,979.62	35,838.60	33,700.00	33,700.00	33,048.00	(652.00)
01 E 005 110 000 000 306	Loan Origination Fees	-	1,000.00	-	-	-	-
01 E 005 110 000 000 310	Region V	1,494.75	1,836.00	1,929.00	1,929.00	1,929.00	-
01 E 005 110 000 000 311	ADP	5,903.24	7,905.00	5,800.00	6,300.00	5,800.00	(500.00)
01 E 005 110 000 000 312	Legal	11,507.69	3,000.00	3,000.00	12,000.00	4,000.00	(8,000.00)
01 E 005 105 000 000 320	Communications - Internet/Cable	2,568.05	244.80	3,000.00	3,000.00	2,600.00	(400.00)
01 E 005 105 000 000 321	Communications - Cell & Land Lines	11,047.14	856.80	14,400.00	39,400.00	27,400.00	(12,000.00)
01 E 005 105 000 000 329	Postage	1,769.22	2,000.00	2,000.00	2,000.00	1,500.00	(500.00)

For Management Purposes Only

2014-2015 ANNUAL REPORT – Augsburg Fairview Academy, District #4111

Augsburg Fairview Academy
Detailed Income Expense Budget Statement

		Year-To-Date Activity As of April '15	FY15 Approved Original (148 ADM)	FY15 Approved Revised (132 ADM)	FY15 Working Budget (130 ADM)	FY16 Proposed Original (140 ADM)	Difference
	Description						
01 E 010 050 000 000 366	Travel/Conferences/Conventions	-	2,560.00	500.00	500.00	500.00	-
01 E 005 105 000 000 370	Copier Lease & Usage Fees	7,067.98	8,160.00	7,438.10	7,438.10	7,438.10	-
	Total Purchased Services	107,753.69	109,180.20	111,941.10	158,231.10	130,020.60	(28,210.50)
	Supplies						
01 E 005 105 000 000 401	Non-Instructional supplies - Other Administrative	9,354.91	13,500.00	13,500.00	12,500.00	10,500.00	(2,000.00)
01 E 005 107 000 000 401	Recruiting Materials	-	-	-	1,000.00	1,000.00	-
01 E 005 010 000 000 820	MACS Membership	4,123.60	4,123.60	4,123.60	4,123.60	4,123.60	-
	Total Supplies	13,478.51	17,623.60	17,623.60	17,623.60	15,623.60	(2,000.00)
	Equipment						
01 E 005 105 000 000 555	Gen Admin Support - Technology Equipment	2,310.00	10,000.00	2,500.00	2,500.00	1,000.00	(1,500.00)
	Total Equipment	2,310.00	10,000.00	2,500.00	2,500.00	1,000.00	(1,500.00)
	Total Administration	288,393.19	342,325.95	328,447.52	376,253.97	340,898.09	(35,355.88)
	School Wide						
	Salaries						
01 E 010 211 000 000 140	Lead Teacher, 1.0 FTE	50,965.62	63,339.25	63,339.25	63,339.25	54,550.86	(8,788.39)
01 E 010 211 000 000 144	Hall Monitor, Workforce Coordinator	27,782.84	31,171.92	36,567.06	36,567.06	39,464.45	2,897.39
01 E 010 211 001 000 144	Workforce Coordinator	-	24,977.50	-	-	-	-
01 E 010 211 000 000 170	Admissions Coord./ Attendance Coord.	39,566.53	\$49,330.56	51,220.26	51,220.26	67,439.25	16,218.99
	Total Salaries	118,314.79	168,819.23	151,126.57	151,126.57	161,454.56	10,327.99
	Benefits						
01 E 010 211 000 000 210	FICA - Lead Teacher/Admin Assist/C&C/F Dir	9,167.11	11,317.54	11,874.83	11,874.83	12,764.00	889.17
01 E 010 211 000 000 218	TRA - Lead Teacher/C&C/F Director	5,048.54	6,803.43	8,008.41	8,008.41	8,205.11	196.70
01 E 010 211 000 000 214	PERA - Admin Assistant	4,008.78	4,342.46	3,512.46	4,512.46	4,165.00	(347.46)
01 E 010 211 000 000 220	Health Insur. - Lead Teacher/Admin Assist/C&C	5,336.31	6,052.20	5,795.06	5,795.06	11,321.89	5,526.82
01 E 010 211 000 000 235	Dental Insur. - Lead Teacher/Admin Assist/C&C	1,334.04	780.39	904.80	1,500.00	1,538.16	38.16
	Total Benefits	24,894.78	29,096.02	30,095.57	31,690.77	37,994.16	6,303.39
	Purchased Services						
01 E 010 211 000 000 306	Substitute Teachers (Pool days @ \$170.00)	5,185.00	8,000.00	7,000.00	7,000.00	4,000.00	(3,000.00)
01 E 010 211 000 000 307	Microsoft Office (Staff Only)	-	650.00	650.00	-	-	-
01 E 010 211 000 000 390	PSEO tuition for participating students	110.00	4,000.00	2,000.00	2,000.00	3,000.00	1,000.00
01 E 010 211 000 000 394	Atlas curriculum mapping software subscription	1,500.00	1,500.00	1,500.00	1,500.00	-	(1,500.00)
	Total Purchased Services	6,795.00	14,150.00	11,150.00	10,500.00	7,000.00	(3,500.00)

For Management Purposes Only

Page 3 of 13

2014-2015 ANNUAL REPORT – Augsburg Fairview Academy, District #4111

Augsburg Fairview Academy
Detailed Income Expense Budget Statement

Description	Year-To-Date Activity As of April '15	FY15 Approved Original (148 ADM)	FY15 Approved Revised (132 ADM)	FY15 Working Budget (130 ADM)	FY16 Proposed Original (140 ADM)	Difference
Supplies						
01 E 010 211 000 000 401 Non-Instructional – Materials (for faculty, incl. l	4,053.95	2,500.00	2,500.00	5,200.00	2,500.00	(2,700.00)
01 E 010 211 000 000 402 Hope Project	1,049.21	-	5,000.00	5,000.00	-	(5,000.00)
01 E 010 211 000 000 403 Family Night	-	-	-	-	2,000.00	2,000.00
01 E 010 298 000 000 401 Graduation	280.09	1,020.00	1,020.00	1,020.00	1,020.00	-
01 E 010 211 000 000 430 Instructional Supplies	-	4,500.00	-	-	-	-
01 E 010 211 000 000 459 APEX Learning Digital Curriculum	12,620.00	20,000.00	17,500.00	12,620.00	-	(12,620.00)
01 E 010 211 000 000 462 Renaissance Place STAR Assessment Packag	1,960.60	1,960.60	1,960.60	1,960.60	1,960.60	-
Total Supplies	19,973.85	29,980.60	27,980.60	25,800.60	7,480.60	(18,320.00)
Equipment						
01 E 010 211 000 000 530 Equipment purchased – Furniture (tables & ch	73.28	2,000.00	500.00	75.00	500.00	425.00
01 E 010 211 000 000 555 Equipment purchased – Computers & Technol	21,081.57	16,000.00	22,000.00	22,000.00	5,000.00	(17,000.00)
Total Equipment	21,154.85	18,000.00	22,500.00	22,075.00	5,500.00	(16,575.00)
Total School Wide	191,133.27	260,045.85	242,852.74	241,192.94	219,429.32	(21,763.62)
General Education						
Salaries						
01 E 025 220 000 000 140 English-Language Arts	80,671.91	91,167.88	92,416.75	92,416.75	86,422.15	(5,994.60)
01 E 025 256 000 000 140 Mathematics	58,034.86	99,910.00	76,832.96	76,832.96	43,710.63	(33,122.34)
01 E 025 257 000 000 140 Technology Teacher	-	-	-	-	11,346.19	11,346.19
01 E 025 260 000 000 140 Science	37,401.24	53,389.41	53,389.41	53,389.41	55,574.94	2,185.53
01 E 025 270 000 000 140 Social Studies/Communications Specialist	54,450.04	61,194.88	81,176.88	81,176.88	63,068.19	(18,108.69)
01 E 025 212 000 000 140 Visual Arts	14,153.92	21,230.88	21,230.88	21,230.88	43,710.63	22,479.75
01 E 025 211 000 000 140 College & Career Coordinator	14,153.92	21,230.88	21,230.88	21,230.88	-	(21,230.88)
01 E 025 240 000 000 140 Health & Wellness Coordinator, Physical Educ	32,054.40	48,081.69	48,081.69	48,081.69	27,475.25	(20,606.44)
01 E 025 211 000 000 141 General Paraprofessional	17,739.18	22,479.75	26,975.70	26,975.70	18,733.13	(8,242.58)
Total Salaries	298,659.47	418,685.34	421,335.13	421,335.13	350,041.09	(71,294.04)
Benefits						
01 E 025 211 000 000 210 FICA - Paraprofessional	2,529.51	3,343.86	3,687.80	3,687.80	1,433.08	(2,254.72)
01 E 025 212 000 000 210 FICA - Visual Arts	1,044.32	1,624.16	1,624.16	1,624.16	3,343.86	1,719.70
01 E 025 220 000 000 210 FICA - English-Language Arts	4,584.02	6,974.34	7,069.88	7,069.88	6,611.29	(458.59)
01 E 025 240 000 000 210 FICA - Phy Ed/Health & Wellness Coord	2,247.51	3,678.25	3,678.25	3,678.25	2,101.86	(1,576.39)
01 E 025 256 000 000 210 FICA - Mathematics	4,241.53	7,643.12	5,877.72	5,877.72	3,343.86	(2,533.86)
01 E 025 257 000 000 210 FICA - Technology	-	-	-	-	867.98	867.98

2014-2015 ANNUAL REPORT – Augsburg Fairview Academy, District #4111

Augsburg Fairview Academy
Detailed Income Expense Budget Statement

		Year-To-Date Activity As of April '15	FY15 Approved Original (148 ADM)	FY15 Approved Revised (132 ADM)	FY15 Working Budget (130 ADM)	FY16 Proposed Original (140 ADM)	Difference
	Description						
01 E 025 260 000 000 210	FICA - Science	2,844.09	4,084.29	4,084.29	4,084.29	4,251.48	167.19
01 E 025 270 000 000 210	FICA - Social Studies	4,010.07	4,681.41	6,210.03	6,210.03	4,824.72	(1,385.31)
01 E 025 211 000 000 214	PERA - Paraprofessional	1,271.14	1,628.78	1,955.74	1,955.74	1,358.15	(597.59)
01 E 025 211 000 000 218	TRA - College & Career Coordinator	1,061.80	1,582.32	1,582.32	1,582.32	-	(1,582.32)
01 E 025 212 000 000 218	TRA - Visual Arts	1,061.60	1,582.32	1,582.32	1,582.32	3,278.30	1,685.98
01 E 025 220 000 000 218	TRA - English-Language Arts	4,620.80	6,837.59	6,931.26	6,931.26	6,481.66	(449.59)
01 E 025 240 000 000 218	TRA - Health & Wellness/Phy Ed	2,404.16	3,606.13	3,606.13	3,606.13	2,060.64	(1,545.48)
01 E 025 256 000 000 218	TRA - Mathematics	4,352.68	7,493.25	5,762.47	5,762.47	3,278.30	(2,484.18)
01 E 025 257 000 000 218	TRA - Technology	-	-	-	-	850.96	850.96
01 E 025 260 000 000 218	TRA - Science	2,736.84	4,004.21	4,004.21	4,004.21	4,168.12	163.91
01 E 025 270 000 000 218	TRA - Social Studies	4,045.28	4,588.62	6,088.27	6,088.27	4,730.11	(1,358.15)
01 E 025 211 000 000 220	Health Insurance - College & Career Coordina	1,372.03	4,539.15	1,317.06	1,467.06	-	(1,467.06)
01 E 025 212 000 000 220	Health Insurance - Visual Arts	1,426.82	1,513.05	1,317.06	1,720.82	2,634.12	913.30
01 E 025 220 000 000 220	Health Insurance - English/Language Arts	7,809.48	6,052.20	5,268.24	9,073.48	5,268.24	(3,805.24)
01 E 025 230 000 000 220	Health Insurance - World Language	128.04	-	128.04	128.04	-	(128.04)
01 E 025 240 000 000 220	Health Insurance - Health & Wellness/Phy Ed	1,207.30	1,664.36	1,448.70	1,448.30	1,448.70	(0.60)
01 E 025 256 000 000 220	Health Insurance - Mathematics	3,987.42	6,041.10	3,851.12	4,427.42	2,634.12	(1,793.30)
01 E 025 257 000 000 220	Health Insurance - Technology	-	-	-	-	526.82	526.82
01 E 025 260 000 000 220	Health Insurance - Science	2,415.91	3,779.85	3,292.62	2,855.91	2,634.12	(221.79)
01 E 025 270 000 000 220	Health Insurance - Social Studies	1,609.82	4,539.15	5,268.24	1,903.82	5,268.24	3,364.42
01 E 025 211 000 000 235	Dental Insurance - College & Career Coordina	434.17	780.39	226.20	600.00	-	(600.00)
01 E 025 212 000 000 235	Dental Insurance - Visual Arts	203.76	260.13	226.20	226.20	452.40	226.20
01 E 025 220 000 000 235	Dental Insurance - English-Language Arts	865.61	1,040.52	904.80	904.80	904.80	-
01 E 025 240 000 000 235	Dental Insurance - Health & Wellness Coord/P	522.28	546.27	475.02	602.28	248.82	(353.46)
01 E 025 256 000 000 235	Dental Insurance - Mathematics	1,583.51	1,040.52	678.60	1,657.46	452.40	(1,205.06)
01 E 025 257 000 000 235	Dental Insurance - Technology	-	-	-	-	90.48	90.48
01 E 025 260 000 000 235	Dental Insurance - Science	600.68	650.33	565.50	656.68	452.40	(204.28)
01 E 025 270 000 000 235	Dental Insurance - Social Studies	635.20	780.39	908.40	908.40	904.80	(3.60)
Total Benefits		67,457.16	96,602.03	89,740.63	92,346.50	76,904.86	(15,441.65)
Purchased Services							
01 E 025 211 000 000 369	Field Trips	4,999.70	6,600.00	6,600.00	6,600.00	3,000.00	(3,600.00)
Total Purchased Services		4,999.70	6,600.00	6,600.00	6,600.00	3,000.00	(3,600.00)
Supplies							
01 E 025 211 000 000 401	Non Instructional Supplies	-	100.00	-	-	-	-
01 E 025 211 000 000 430	Instructional Supplies – shared (not science)	3,115.59	3,000.00	3,000.00	4,500.00	4,000.00	(500.00)

For Management Purposes Only

Page 5 of 13

Augsburg Fairview Academy
Detailed Income Expense Budget Statement

	Year-To-Date Activity As of April '15	FY15 Approved Original (148 ADM)	FY15 Approved Revised (132 ADM)	FY15 Working Budget (130 ADM)	FY16 Proposed Original (140 ADM)	Difference
Description						
01 E 025 240 000 000 430 Fitness supplies and small equipment	70.62	1,000.00	500.00	75.00	-	(75.00)
01 E 025 260 000 000 430 Instructional Supplies - Science	670.99	1,000.00	1,000.00	750.00	1,000.00	250.00
01 E 025 211 000 000 480 Textbooks & Curriculum resources	1,579.52	1,000.00	1,600.00	1,600.00	4,100.00	2,500.00
01 E 035 211 000 000 820 Instructional Software Licenses (ALEKS)	3,341.06	5,600.00	5,600.00	3,341.06	1,200.00	(2,141.06)
Total Supplies	8,777.78	11,700.00	11,700.00	10,266.06	10,300.00	33.94
Total General Education	369,894.11	533,587.38	529,375.76	530,547.69	440,245.95	(90,301.74)
Success for the Future						
Salaries						
01 E 010 211 000 320 110 Indian Education Coordinator	4,041.70	4,850.00	4,850.00	4,850.00	4,850.00	-
01 E 010 230 000 320 140 Language Teachers	18,148.93	24,977.50	24,977.50	24,977.50	24,977.50	-
Total Salaries	22,190.63	29,827.50	29,827.50	29,827.50	29,827.50	-
Benefits						
01 E 010 211 000 320 210 Success for the Future - FICA	309.20	371.03	371.03	371.03	371.03	-
01 E 010 230 000 320 210 Success for the Future - FICA	1,388.39	1,910.78	1,910.78	1,910.78	1,910.78	-
01 E 010 211 000 320 214 Success for the Future - PERA	293.00	351.63	351.63	351.63	351.63	-
01 E 010 230 000 320 214 Success for the Future - PERA	689.05	905.43	905.43	905.43	905.43	-
01 E 010 230 000 320 218 Success for the Future - TRA	661.81	936.66	936.66	936.66	936.66	-
Total Benefits	3,341.45	4,475.52	4,475.52	4,475.52	4,475.52	-
Purchased Services						
01 E 010 211 000 320 305 Contracted Services	1,901.00	900.00	2,200.00	2,200.00	2,200.00	-
01 E 010 211 000 320 360 Field Trip Transportation	-	400.00	-	-	-	-
01 E 010 211 000 320 366 Conferences/Training	1,205.87	1,985.00	1,632.72	1,632.72	1,632.72	-
01 E 010 640 000 320 366 Staff Development	1,060.00	800.00	1,000.00	1,000.00	1,000.00	-
01 E 010 211 000 320 394 Field Trips	481.20	600.00	1,000.00	1,000.00	1,000.00	-
Total Purchased Services	4,648.07	4,685.00	5,832.72	5,832.72	5,832.72	-
Supplies						
01 E 010 230 000 320 430 Language Class Supplies	299.68	1,400.00	1,000.00	1,000.00	1,000.00	-
01 E 010 211 000 320 470 Resource Library	307.75	651.01	353.29	353.29	353.29	-
01 E 010 211 000 320 490 November Community Event Meal	200.00	120.39	409.71	409.71	409.71	-
Total Supplies	807.43	2,171.40	1,763.00	1,763.00	1,763.00	-
Total Success for the Future	30,987.58	41,159.42	41,898.74	41,898.74	41,898.74	-

Augsburg Fairview Academy
Detailed Income Expense Budget Statement

	Description	Year-To-Date Activity As of April '15	FY15 Approved Original (148 ADM)	FY15 Approved Revised (132 ADM)	FY15 Working Budget (130 ADM)	FY16 Proposed Original (140 ADM)	Difference
State Special Education							
Salaries							
01 E 010 420 000 740 140	SPED Licensed Teacher	107,530.44	149,190.61	148,616.13	148,616.13	149,865.00	1,248.88
01 E 010 420 000 740 144	SPED Workforce Coordinator	12,488.80	24,977.50	18,733.13	18,733.13	25,477.05	6,743.93
01 E 010 420 000 740 156	SPED Social Worker	43,106.65	56,511.59	57,448.25	54,737.62	58,896.95	4,159.32
01 E 010 420 000 740 161	SPED Para	107,880.86	142,371.75	172,344.75	172,344.75	176,081.38	3,746.63
01 E 010 420 000 740 170	SPED Admin	1,488.60	-	2,769.50	1,873.31	2,425.00	551.69
01 E 010 420 000 740 175	SPED Cultural Liason	8,885.78	9,891.09	9,891.09	9,891.09	10,303.22	412.13
Total Salaries		281,391.13	382,942.54	409,802.84	408,196.02	423,058.59	16,862.56
Benefits							
01 E 010 420 000 740 210	FICA - Special Education	21,115.85	29,295.10	31,349.92	31,074.00	32,363.98	1,289.99
01 E 010 420 000 740 214	PERA - Special Education	9,471.96	11,039.06	13,212.10	15,648.23	17,959.45	2,311.22
01 E 010 420 000 740 218	TRA - Special Education Licensed Teacher	11,486.72	17,300.98	17,067.53	14,276.88	13,150.65	(1,126.23)
01 E 010 420 000 740 220	Health Ins. - Special Education Social Worker	15,073.98	24,178.54	16,278.86	16,706.91	21,613.07	4,906.17
01 E 010 420 000 740 235	Dental Ins. - Special Education	2,344.86	4,158.88	2,795.83	3,050.31	3,700.63	650.33
Total Benefits		59,493.37	85,970.55	80,704.23	80,758.32	88,787.79	8,031.47
Purchased Services							
01 E 010 420 640 740 366	Travel/Conferences - Special Education	75.00	1,200.00	1,200.00	75.00	-	(75.00)
01 E 010 420 000 740 394	Expert Consultant Support Services	8,830.00	140.00	5,000.00	9,000.00	9,000.00	-
01 E 010 401 000 740 394	Speech Support Services	1,009.00	1,000.00	1,000.00	1,200.00	1,000.00	(200.00)
01 E 010 411 000 740 394	ASD Support Services	2,455.52	4,000.00	4,000.00	4,000.00	4,000.00	-
Total Purchased Services		12,369.52	1,340.00	11,200.00	14,275.00	14,000.00	(275.00)
Supplies							
01 E 010 420 000 740 433	Instructional Supplies - General	437.81	300.00	500.00	500.00	500.00	-
Total Supplies		437.81	300.00	500.00	500.00	500.00	-
Total State Special Education		353,691.83	470,553.10	502,207.08	501,727.34	526,346.38	24,619.04
Federal Special Education							
Purchased Services							
01 E 010 420 000 419 303	Special Education Director/Coordinator Fees	22,562.94	22,850.00	22,850.00	22,850.00	22,850.00	-
01 E 010 420 000 419 329	Special Education - Postage	6.70	-	-	20.00	20.00	-
01 E 010 410 000 419 372	Special Education - Occupational Therapy	3,367.00	6,000.00	6,000.00	6,000.00	6,000.00	-
Total Purchased Services		25,936.64	28,850.00	28,850.00	28,870.00	28,870.00	-

For Management Purposes Only

Page 7 of 13

Augsburg Fairview Academy
Detailed Income Expense Budget Statement

Description	Year-To-Date Activity As of April '15	FY15 Approved Original (148 ADM)	FY15 Approved Revised (132 ADM)	FY15 Working Budget (130 ADM)	FY16 Proposed Original (140 ADM)	Difference
Supplies						
01 E 010 420 000 419 401 Non-Instructional Supplies	888.26	3,624.21	3,624.21	3,604.21	3,604.21	-
Total Supplies	888.26	3,624.21	3,624.21	3,604.21	3,604.21	-
Total Federal Special Education	26,802.90	32,474.21	32,474.21	32,474.21	32,474.21	-
Federal CEIS						
Salaries						
01 E 010 422 000 425 141 Intervention Specialist	3,203.45	4,100.00	4,100.00	5,691.00	5,395.14	(295.86)
Total Salaries	3,203.45	4,100.00	4,100.00	5,691.00	5,395.14	(295.86)
Supplies						
01 E 010 422 000 425 401 Non-Instructional Supplies	-	500.00	500.00	-	-	-
01 E 010 422 000 425 433 Individualized Instructional Supplies	-	1,091.00	1,091.00	-	-	-
Total Supplies	-	1,591.00	1,591.00	-	-	-
Total Federal CEIS	3,203.45	5,691.00	5,691.00	5,691.00	5,395.14	(295.86)
Title I						
Salaries						
01 E 010 216 000 401 156 School Social Worker	10,271.62	12,176.53	12,498.75	11,585.21	12,763.50	1,178.30
01 E 010 216 000 401 140 Title I Licensed Teacher	-	-	-	-	20,606.44	20,606.44
01 E 010 216 000 401 161 Title I PARA	14,823.90	22,479.75	22,479.75	22,479.75	-	(22,479.75)
Total Salaries	25,095.52	34,656.28	34,978.50	34,064.96	33,369.94	(686.02)
Benefits						
01 E 010 216 000 401 210 FICA - Title I PARA & Social Worker	1,898.82	2,651.21	2,675.09	2,605.97	2,552.80	(53.17)
01 E 010 216 000 401 214 PERA - Title I PERA & Social Worker	1,332.83	1,629.78	1,629.78	1,913.65	925.35	(988.30)
01 E 010 216 000 401 218 TRA - Title I Social Worker	575.26	913.24	936.66	575.23	1,545.48	970.25
01 E 010 216 000 401 220 Health Insurance - Title I	2,634.07	3,782.63	3,292.65	3,402.41	5,926.77	2,524.37
01 E 010 216 000 401 235 Dental Insurance - Title I	563.32	650.33	595.50	584.35	1,017.90	433.55
Total Benefits	6,992.30	9,627.18	9,099.68	9,081.61	11,988.31	2,886.70

2014-2015 ANNUAL REPORT – Augsburg Fairview Academy, District #4111

Augsburg Fairview Academy
Detailed Income Expense Budget Statement

Description	Year-To-Date Activity As of April '15	FY15 Approved Original (148 ADM)	FY15 Approved Revised (132 ADM)	FY15 Working Budget (130 ADM)	FY16 Proposed Original (140 ADM)	Difference
Purchased Services						
01 E 010 216 000 401 303 Title I Purchased Services	3,000.00	6,956.00	6,956.00	6,956.00	6,956.00	-
Total Purchased Services	3,000.00	6,956.00	6,956.00	6,956.00	6,956.00	-
Total Title I	35,087.82	51,239.46	51,024.18	50,102.57	52,294.25	2,191.68
Title II						
Purchased Services						
01 E 010 204 000 414 366 Title II Travel /Conference/Presenter Fees	418.00	4,447.70	4,447.70	4,447.70	4,447.70	-
Total Purchased Services	418.00	4,447.70	4,447.70	4,447.70	4,447.70	-
Total Title II	418.00	4,447.70	4,447.70	4,447.70	4,447.70	-
Instructional Support						
Salaries						
01 E 010 610 000 000 185 Curriculum Development	-	-	-	-	20,000.00	20,000.00
01 E 010 630 000 000 144 Technology Coordinator	-	-	-	-	45,384.76	45,384.76
01 E 010 640 000 000 185 Staff Development - Stipends	1,284.64	-	1,284.64	1,284.64	-	(1,284.64)
Total Salaries	1,284.64	-	1,284.64	1,284.64	65,384.76	64,100.12
Benefits						
01 E 010 610 000 000 210 Curriculum Development - FICA	-	-	-	-	1,530.00	1,530.00
01 E 010 630 000 000 210 Technology Coordinator - FICA	-	-	-	-	3,471.93	3,471.93
01 E 010 640 000 000 210 Staff Development - FICA	96.15	-	96.15	96.15	-	(96.15)
01 E 010 640 000 000 214 Staff Development - PERA	23.62	-	23.62	23.62	-	(23.62)
01 E 010 610 000 000 218 Curriculum Development - TRA	-	-	-	-	1,500.00	1,500.00
01 E 010 630 000 000 218 Technology Coordinator - TRA	-	-	-	-	3,403.86	3,403.86
01 E 010 640 000 000 218 Staff Development - TRA	71.00	-	71.00	71.00	-	(71.00)
01 E 010 630 000 000 220 Technology Coordinator - Health Insurance	-	-	-	-	2,107.30	2,107.30
01 E 010 630 000 000 235 Technology Coordinator - Dental Insurance	-	-	-	-	361.92	361.92
Total Benefits	190.77	-	190.77	190.77	12,375.01	12,184.24
Purchased Services						
01 E 010 640 000 306 366 Staff Development	1,893.88	6,000.00	3,000.00	2,500.00	1,000.00	(1,500.00)
Total Purchased Services	1,893.88	6,000.00	3,000.00	2,500.00	1,000.00	(1,500.00)

2014-2015 ANNUAL REPORT – Augsburg Fairview Academy, District #4111

Augsburg Fairview Academy
Detailed Income Expense Budget Statement

	Year-To-Date Activity As of April '15	FY15 Approved Original (148 ADM)	FY15 Approved Revised (132 ADM)	FY15 Working Budget (130 ADM)	FY16 Proposed Original (140 ADM)	Difference
Supplies						
01 E 010 620 000 000 470 Multi Racial Media Center	853.54	-	2,000.00	2,000.00	-	(2,000.00)
01 E 010 840 000 306 401 Non-Instructional Supplies - Staff Development	-	520.00	520.00	-	-	-
01 E 010 840 000 306 490 Food - Staff Development	2,019.10	500.00	2,100.00	2,100.00	1,000.00	(1,100.00)
Total Supplies	2,872.64	1,020.00	4,620.00	4,100.00	1,000.00	(3,100.00)
Total Instructional Support	6,241.93	7,020.00	9,095.41	8,075.41	79,759.77	71,684.36
Student Support Services						
Salaries						
01 E 010 740 000 000 144 School Social Worker Interns	4,500.00	8,000.00	8,000.00	8,000.00	4,000.00	(2,000.00)
01 E 010 740 000 000 156 School Social Worker	16,871.33	29,973.00	29,973.00	29,973.00	20,606.44	(9,366.56)
01 E 010 740 000 000 170 School Social Worker Administration	7,243.26	17,484.25	11,078.02	7,493.25	9,991.00	2,497.75
01 E 005 760 000 728 170 Van Driver	8,242.36	11,250.00	11,250.00	11,250.00	11,250.00	-
Total Salaries	36,856.95	64,707.25	58,301.02	54,716.25	45,847.44	(8,868.81)
Benefits						
01 E 010 740 000 000 210 FICA – School Social Worker	2,167.39	4,089.48	3,599.40	3,325.17	2,846.70	(678.48)
01 E 010 740 000 000 214 PERA – School Social Worker	1,788.59	435.00	435.00	3,151.30	2,508.31	(642.99)
01 E 010 740 000 000 218 TRA – School Social Worker	-	3,559.29	3,078.83	-	-	-
01 E 010 740 000 000 220 Health Insurance – School Social Worker	1,426.75	7,867.86	3,687.77	2,107.30	1,317.06	(790.24)
01 E 010 740 000 000 235 Dental Insurance – School Social Worker	324.47	1,352.88	633.36	633.36	226.20	(407.16)
01 E 005 760 000 728 210 Van Driver - FICA	585.78	860.63	860.63	860.63	860.63	-
01 E 005 760 000 728 214 Van Driver - PERA	148.44	-	-	-	-	-
01 E 005 760 000 728 218 Van Driver - TRA	390.01	843.75	843.75	843.75	843.75	-
Total Benefits	6,831.43	19,008.68	13,138.73	10,921.50	8,402.65	(2,518.85)
Purchased Services						
01 E 005 760 000 728 305 Van - Maint., Insurance, Misc.	308.76	3,600.00	3,600.00	500.00	3,600.00	3,100.00
01 E 005 760 000 720 360 Contracted Transportation	56,460.27	57,936.00	57,936.00	57,936.00	57,936.00	-
01 E 005 760 000 733 360 Field Trip Transportation	1,458.82	-	-	1,500.00	1,000.00	(500.00)
Total Purchased Services	58,227.85	61,536.00	61,536.00	59,936.00	62,536.00	2,600.00

For Management Purposes Only

Augsburg Fairview Academy
Detailed Income Expense Budget Statement

Description	Year-To-Date Activity As of April '15	FY15 Approved Original (148 ADM)	FY15 Approved Revised (132 ADM)	FY15 Working Budget (130 ADM)	FY16 Proposed Original (140 ADM)	Difference
Transfer to Other Funds						
01 E 005 950 000 000 910 Transfers-Perm Interfd Transf	-	27,349.87	35,330.23	34,751.29	31,144.95	(3,606.34)
Total Transfer to Other Funds	-	27,349.87	35,330.23	34,751.29	31,144.95	(3,606.34)
Total Building & Maintenance	367,867.04	429,933.47	415,088.83	418,982.06	420,435.07	1,453.01
FUND 1 - TOTAL EXPENDITURES	1,779,062.40	2,328,729.47	2,301,078.92	2,341,467.38	2,286,410.70	(55,056.68)
FUND 1 - NET INCOME	298,587.86	85,464.31	3,525.16	(10,315.05)	40,144.62	50,459.67
FUND 02 - REVENUE						
State Revenue						
02 R 005 000 000 701 300 State - Regular Lunch	405.23	690.10	690.10	520.00	520.00	-
02 R 005 000 000 705 300 State - Breakfast Program	172.70	100.00	100.00	175.00	-	(175.00)
Total State Revenue	577.93	790.10	790.10	695.00	520.00	(175.00)
Federal Revenue						
02 R 005 000 000 701 471 Federal - Regular Lunch	1,167.12	1,511.88	1,511.88	1,512.00	1,512.00	-
02 R 005 000 000 701 472 Federal - Free & Reduced	7,200.90	12,903.11	12,903.11	11,200.00	11,200.00	-
02 R 005 000 000 701 473 Federal - Commodities Credit	2,886.84	1,350.00	1,350.00	2,886.84	1,350.00	(1,536.84)
02 R 005 000 000 705 476 Federal - Breakfast	3,478.93	4,271.17	4,271.17	5,200.00	5,200.00	-
Total Federal Revenue	14,733.79	20,036.16	20,036.16	20,798.84	19,262.00	(1,536.84)
Local Revenue						
02 R 005 000 000 701 601 Student Fees - Regular Lunch	-	1,542.48	-	-	-	-
02 R 005 950 000 701 649 Transfers-Perm Interfd Transf	-	27,349.87	35,330.23	34,751.29	31,144.95	(3,606.34)
Total Local Revenue	-	28,892.35	35,330.23	34,751.29	31,144.95	(3,606.34)
FUND 2 - REVENUE	15,311.72	49,718.61	56,156.49	56,245.13	50,926.95	(5,318.18)
FUND 2 - EXPENDITURES						
Salaries						
02 E 005 770 000 701 110 Nutrition Program Head	-	22,479.75	-	-	-	-
02 E 005 770 000 701 170 Food service wages	17,178.44	2,547.71	30,122.87	25,122.87	26,226.38	1,103.51
Total Salaries	17,178.44	25,027.46	30,122.87	25,122.87	26,226.38	1,103.51

Augsburg Fairview Academy
Detailed Income Expense Budget Statement

Description	Year-To-Date Activity As of April '15	FY15		FY15		FY15		FY16		Difference
		Approved Original (148 ADM)	Approved Revised (132 ADM)	Working Budget (130 ADM)	Proposed Original (140 ADM)	Approved Original (148 ADM)	Approved Revised (132 ADM)	Working Budget (130 ADM)	Proposed Original (140 ADM)	
Benefits										
02 E 005 770 000 701 210 FICA-Food Services	1,144.12	1,914.80	2,304.40	2,304.40	2,006.32	1,914.80	2,304.40	2,304.40	2,006.32	(298.08)
02 E 005 770 000 701 214 PERA-Food Services	161.70	184.71	554.13	554.13	-	161.70	554.13	554.13	-	(554.13)
02 E 005 770 000 701 218 TRA-Food Services	1,124.00	1,685.98	1,685.98	1,685.98	1,686.98	1,124.00	1,685.98	1,685.98	1,686.98	281.00
02 E 005 770 000 701 220 Health Insurance-Food Services	913.11	1,361.75	1,975.54	1,975.54	1,185.30	913.11	1,975.54	1,975.54	1,185.30	(790.24)
02 E 005 770 000 701 235 Dental Insurance-Food Services	239.95	234.12	203.58	253.58	655.98	239.95	203.58	253.58	655.98	402.40
Total Benefits	3,582.88	5,381.15	6,723.62	8,773.62	5,814.58	3,582.88	6,723.62	8,773.62	5,814.58	(959.05)
Supplies										
02 E 005 770 000 701 401 Supplies	726.71	1,100.00	1,100.00	760.00	760.00	726.71	1,100.00	760.00	760.00	-
02 E 005 770 000 701 490 Food Services - Lunch	14,181.58	15,000.00	15,000.00	19,881.00	15,000.00	14,181.58	15,000.00	19,881.00	15,000.00	(4,881.00)
02 E 005 770 000 705 490 Food Services - Breakfast	866.57	1,500.00	1,500.00	1,666.57	1,500.00	866.57	1,500.00	1,666.57	1,500.00	(166.57)
02 E 005 770 000 703 495 Food Services - Milk	1,560.07	1,500.00	1,500.00	1,815.07	1,400.00	1,560.07	1,500.00	1,815.07	1,400.00	(415.07)
02 E 005 770 000 701 820 Dues & Subscriptions	226.00	210.00	210.00	226.00	226.00	226.00	210.00	226.00	226.00	-
Total Supplies	17,560.93	19,310.00	19,310.00	24,348.64	18,886.00	17,560.93	19,310.00	24,348.64	18,886.00	(5,462.64)
FUND 2 - EXPENDITURES	38,322.25	49,718.61	56,156.49	56,245.13	50,926.95	38,322.25	56,156.49	56,245.13	50,926.95	(5,318.18)
FUND 2 - NET INCOME (LOSS)	(23,010.53)	-	-	(0.00)	-	(23,010.53)	-	(0.00)	-	0.00
ALL FUNDS - NET INCOME (LOSS)	275,577.33	85,464.31	3,525.16	(10,315.05)	40,144.62	275,577.33	85,464.31	(10,315.05)	40,144.62	50,459.67
FY14 Fund Balance		326,795	326,795	326,795	316,480		326,795	326,795	316,480	
FY15 Fund Balance		412,259	330,320	316,480	356,624		330,320	316,480	356,624	

